

Queen's Park Rally in Support of Bill 93 (Ombudsman oversight of CAS agencies)

Queen's Park, Ontario – Monday, October 5, 2009 – 10:00 am to 4:00 pm

Website: <http://rally4accountability.webs.com/index.htm>

Every year in Ontario, thousands of Ontario children and their families are adversely affected and in many cases torn apart as a result of the abuse of power and authority by various privately owned children's aid societies (CAS) in Ontario.

On Monday, October 5, 2009 in front of the Ontario Legislature at Queen's Park, concerned citizens from Ontario will be organizing a public awareness campaign to help bring to the attention of the public, the plight of children and families being adversely affected by the various children's aid societies in Ontario

The group also wants to raise support for Bill 93 currently before the Legislature which is intended to give the Ombudsman the power to oversee the provinces various Children's Aid Societies.

to network with others who have been similarly affected or who have similar interests.

Participants can help to distribute literature to members of the public at the event and in the immediate proximity. Children are welcome to participate in this show of democracy.

Those who wish to participate should call organizers ahead of time and advise us so that we can schedule their participation with the group and to ensure that we can keep participants informed of any unexpected last minute changes.

Overnight Accommodation

For those who may wish to attend the event from out of town and would like to stay overnight after the event, contact organizers if you want further information about accommodation in the Toronto area.

When and where to meet

Participants are encouraged to arrive anytime after 9:00 am just after the morning rush hour in Toronto. Those who arrive before the event and may wish to have some breakfast prior to the event can meet at the lower level food court on the south west corner of College and University Avenue.

Car pooling

To help participants reduce travel costs, we will help arrange car pools from different areas. If you would like to offer someone a ride or would like to get a ride with someone else, then please contact us and we will try to help you coordinate a ride with someone else.

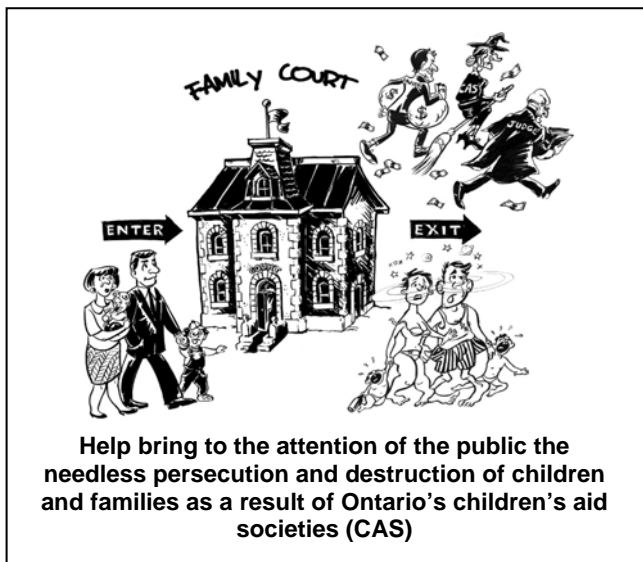
For further information or to help

If you would like any further information or would like to help on the day of the event or to ensure that you name is on the list of interested participants then contact some of the organizers below:

Jaccie (613) 384-9707

Andrew (613) 242-8566

Email: cas.accountability@hotmail.com



Scheduled guest speakers at the event will include MPP Andrea Horwarth, MPP Randy Hillier, John Dunn and Richard Bertrand (After Foster Care Council of Canada), Robert McQuaid (Dufferin VOCA), Steve Rudd (Church of Christ), Kris Titus (Fathers for Justice), Mary Janiga (Child Assist Services) and Archbishop Dorian A. Baxter (Canada Court Watch) as well as others.

If you are a parent or a child who has been affected or a citizen who would like to assist your fellow Canadians to bring greater accountability and transparency to the children's aid society and its workers, then we urge you to attend this event. This will be a good opportunity for individuals and families

Where to park during the event

Participants can come by public transit to Queen's Park. Buses or subway both stop close by. For those wishing to drive their cars to the event, then refer to the section which provides information about parking (See maps for details)

Tee Shirts and Sweaters

Depending on the weather at the time, participants are encouraged to wear T shirts or sweaters which either convey a message appropriate to the event or advertise the name of their group or organization they belong to.

Tee shirts will be available for pre-order purchase prior to the event depending on interest. Participants are encouraged to pre-purchase a T shirt to help make the event more visible at the event and for personal use at other events. Tee shirts with the general message, "CAS destroys families" will be available.

Picture of T shirts (if available)

Signs

Participants are encouraged to make up and bring their own signs to the event if they are able. There will be a limited number of signs available that can be borrowed for the event. Signs can be purchased from event organizers prior to the event. Participants are encouraged to purchase signs for their personal use which can be used at other events.



A limited number of signs 24"x18" like the one pictured above will be available for purchase at \$10.00 per sign. Signs are silkscreened on rigid plastic and are designed for years of use

Weather

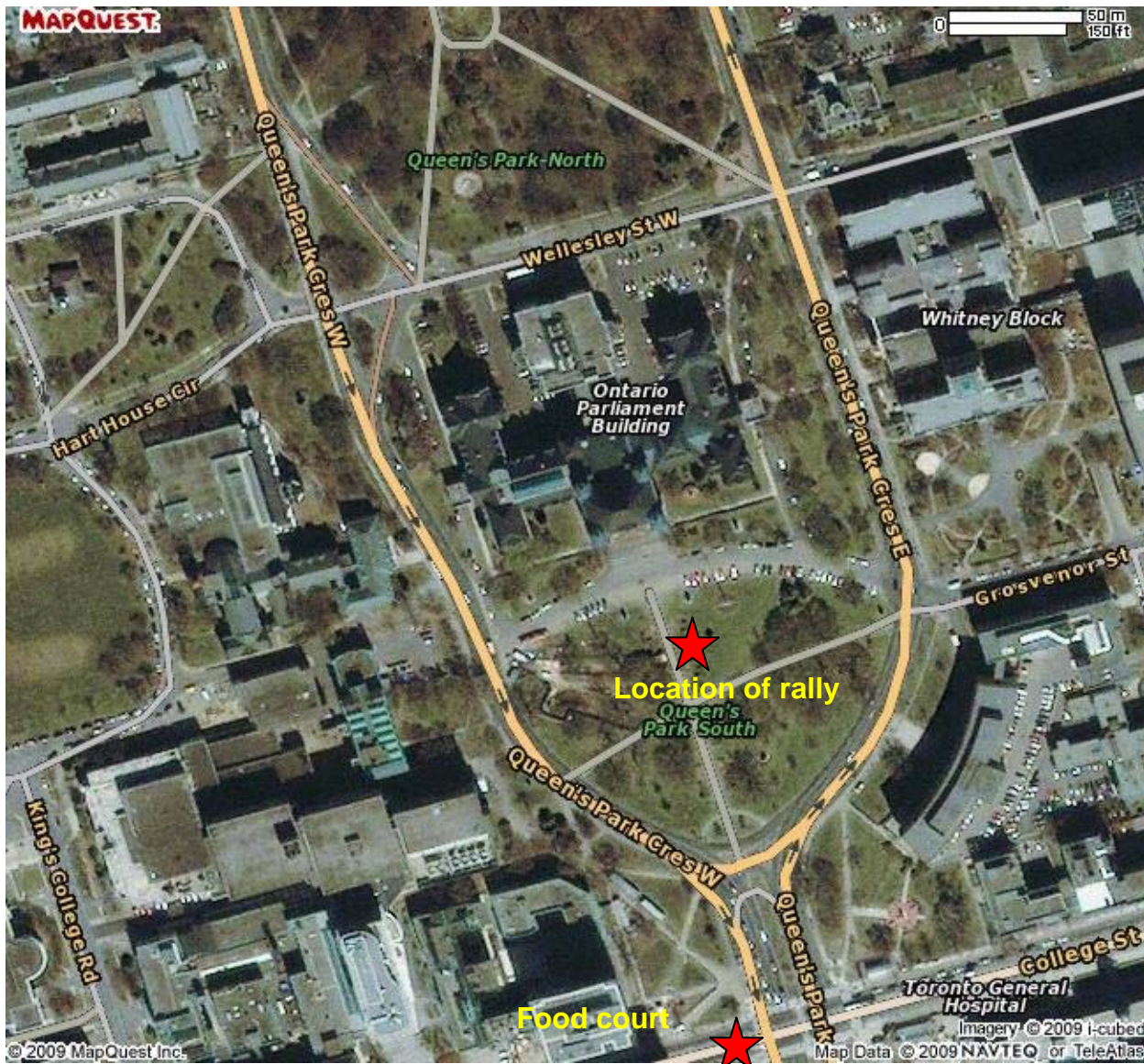
The event is scheduled to proceed rain or shine. Participants would be well advised to check the weather forecast the night before and to come prepared for whatever weather is expected. Umbrellas are recommended if the weather forecast calls for the chance of rain.

Free Gift

All who attend the event will be provided with a free DVD disk which contains lots of information regarding the child protection system in Canada and information which may help parents to fight back for their rights.

Directions to Queens Park Event (Map 1 of 2)

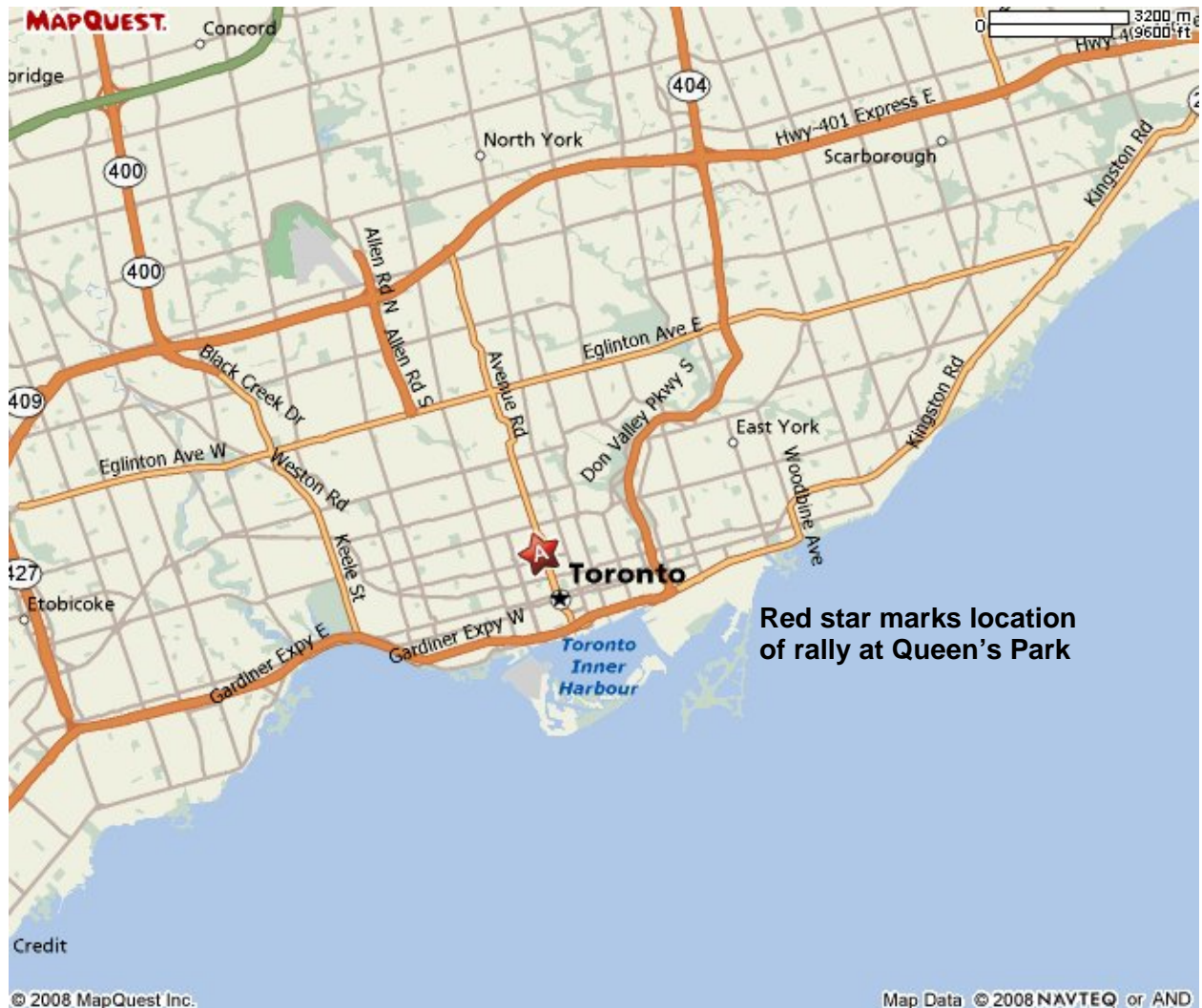
Queens Park located on Queens Park Cr. which is at the north end of University Avenue on the south side and at the south end of Avenue Rd. from the north. Detailed travel instructions can be obtained from [Google Maps](#) or [Mapquest](#) on the internet. The rally will be located on the south side of the Parliament building on the grassed area just south of the parking lot. Please note that the parking lot in front of Queens Park is not for public parking although persons attending the event can be dropped off here.



Driving directions to Queen's Park rally (Map 2 of 2)

Below is a large area map showing the location of Queen's Park which is located in the heart of downtown Toronto, Ontario. Participants driving along the 401 to the north can exit at Avenue Rd. and drive south to Queens Park. Those coming along the Gardner expressway on the south side of Toronto should exit at University Avenue and proceed north to Queen's Park.

Those who wish to have more detailed driving instructions from other specific locations should obtain more information from [Google Maps](#) or [Mapquest](#) on the internet.



Public Transit Options

Go Train

Participants can come to Toronto by the GO train to Union Station from anywhere there is Go Train service in Ontario. One of the advantages of taking the Go Train is that parking is easier at Go Train parking lots outside of the city of Toronto. Once at Union Station, proceed to the Toronto Transit subway line which is just a short walk and take the University Subway line. From the University subway line, exit at Queen's Park subway stop which is just on the south of the Legislative Building and easy walking distance.

Subway

Participants can enter the TTC subway system at any station within the TTC system. Proceed along the Bloor Line to the University Avenue station. Transfer from the Bloor line to the University subway line south and exit at the Queen's Park Station. Subway fare is \$2.75 per fare with an individual day pass costing \$9.00 for unlimited use of the TTC for one day.

Bus

Participants can come to Toronto by bus to the main Toronto bus terminal. The Downtown Toronto bus terminal is very close to the subway line. Participants can walk to the University Subway line and go northbound the Queen's Park subway station which is on the south side of the rally location.

Car Parking

As most likely know, parking for private cars is at a premium in the heart of Toronto where Queen's Park is located. Below are some options available for parking for those who want to park close to the event. Generally, parking can be found by driving around the area but most parking will cost.

Public Parking Lots

There are a number of paid public area within 5 to 20 minute walk of Queen's Park ranging anywhere from \$15 to \$20 per day. It is best to arrive early to easily find parking. There are a number of public lots located all along the subway route where participants can park their cars for daily fee and then get on the subway to the rally location. More information about access to the TTC transit system can be obtained by looking at the subway map of Toronto transit on their

website

at:

http://www3.ttc.ca/Routes/General_Information/Maps/index.jsp

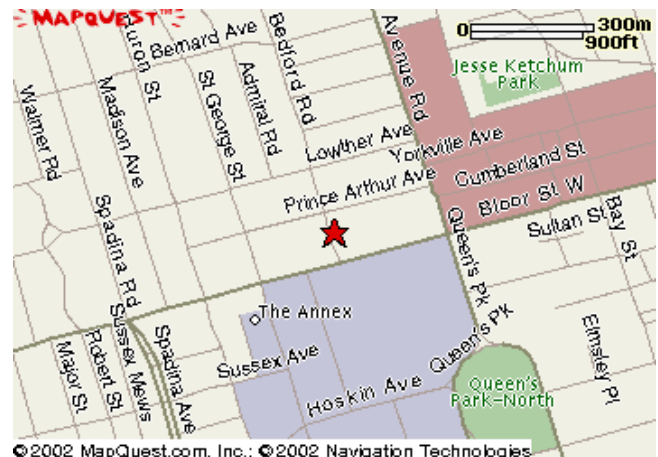
Queen's Park Crescent E. (See Map #1)

Immediately on the east side of the Legislative building is Queen's Park Crescent. There are a very limited number of parking spots which are difficult to obtain get except by chance and by arriving at the right time. These spaces are only available from 9:00 am to 3:30 pm. and the meters must be refreshed regularly. Best chance to get a parking spot here is to be there just before 9:00 am. when the morning parking ban ends. Cars will be ticketed and towed away if parked outside of the designated parking times.

Grosvenor St. (See map #1)

On the east side of the Legislative buildings is Grosvenor St. It is within a 5 minute walk of the rally site. There is some street parking on the north side of Grosvenor St. which is paid for by parking meter. \$2.50 per hour maximum 3 hours but meters can be refreshed. Again, it is best to arrive early to get a spot in this area.

Greenpark Parking Lot - Bedford Rd.



Greenpark Parking has a public parking lot on Bedford Rd. which is located north of Queens Park. It is about a 15 minute walk from the parking lot to Queens Park. Parking rate: \$1.75 per 1/2 hr to MAX of \$12.00 for the day. Daytime Sun, & Holiday (07:00 - 18:00).