

# Births

2007



Statistics  
Canada

Statistique  
Canada

Canada

## How to obtain more information

For information about this product or the wide range of services and data available from Statistics Canada, visit our website at [www.statcan.gc.ca](http://www.statcan.gc.ca), e-mail us at [infostats@statcan.gc.ca](mailto:infostats@statcan.gc.ca), or telephone us, Monday to Friday from 8:30 a.m. to 4:30 p.m., at the following numbers:

### Statistics Canada's National Contact Centre

Toll-free telephone (Canada and the United States):

Inquiries line	1-800-263-1136
National telecommunications device for the hearing impaired	1-800-363-7629
Fax line	1-877-287-4369

Local or international calls:

Inquiries line	1-613-951-8116
Fax line	1-613-951-0581

### Depository Services Program

Inquiries line	1-800-635-7943
Fax line	1-800-565-7757

## To access this product

This product, Catalogue no. 84F0210X, is available free in electronic format. To obtain a single issue, visit our website at [www.statcan.gc.ca](http://www.statcan.gc.ca) and select "Publications."

## Standards of service to the public

Statistics Canada is committed to serving its clients in a prompt, reliable and courteous manner. To this end, Statistics Canada has developed *standards of service* that its employees observe. To obtain a copy of these service standards, please contact Statistics Canada toll-free at 1-800-263-1136. The service standards are also published on [www.statcan.gc.ca](http://www.statcan.gc.ca) under "About us" > "Providing services to Canadians."

# Births

2007

Published by authority of the Minister responsible for Statistics Canada

© Minister of Industry, 2009

All rights reserved. The content of this electronic publication may be reproduced, in whole or in part, and by any means, without further permission from Statistics Canada, subject to the following conditions: that it be done solely for the purposes of private study, research, criticism, review or newspaper summary, and/or for non-commercial purposes; and that Statistics Canada be fully acknowledged as follows: Source (or "Adapted from", if appropriate): Statistics Canada, year of publication, name of product, catalogue number, volume and issue numbers, reference period and page(s). Otherwise, no part of this publication may be reproduced, stored in a retrieval system or transmitted in any form, by any means—electronic, mechanical or photocopy—or for any purposes without prior written permission of Licensing Services, Client Services Division, Statistics Canada, Ottawa, Ontario, Canada K1A 0T6.

September 2009

Catalogue no. 84F0210X

ISSN 1710-5285

Frequency: Annual

Ottawa

Cette publication est également disponible en français.

---

**Note of appreciation**

*Canada owes the success of its statistical system to a long standing partnership between Statistics Canada, the citizens of Canada, its businesses, governments and other institutions. Accurate and timely statistical information could not be produced without their continued cooperation and goodwill.*

# User information

---

## Symbols

The following standard symbols are used in Statistics Canada publications:

- . not available for any reference period
- .. not available for a specific reference period
- ... not applicable
- 0 true zero or a value rounded to zero
- 0<sup>s</sup> value rounded to 0 (zero) where there is a meaningful distinction between true zero and the value that was rounded
- p preliminary
- r revised
- x suppressed to meet the confidentiality requirements of the *Statistics Act*
- E use with caution
- F too unreliable to be published

## Acknowledgements

The cooperation of provincial and territorial Vital Statistics registries who supply the birth data in this report to Statistics Canada is gratefully acknowledged.

# Table of contents

---

<b>Highlights</b>	<b>5</b>
<b>Introduction</b>	<b>6</b>
<b>Analysis</b>	<b>7</b>
A. Number of births	7
B. Fertility	8
C. Echoes of the baby boom	12
D. Change in stillbirths	14
<b>Related products</b>	<b>15</b>
<b>Statistical tables</b>	
1 Live births, by sex and geography	18
2 Live births, by geography	18
2-1 Month	18
2-2 Age of mother	19
2-3 Marital status of mother	20
3 Mean age of mother, by geography	21
4 Crude birth rate, age-specific and total fertility rates, by geography	21
5 Mean and median birth weight, by geography	22
6 Live births, Canada	22
6-1 Age and marital status of mother	22
6-2 Age and parity of mother	23
7 Live births, by birth weight and geography	24
7-1 Both sexes	24
7-2 Males	26
7-3 Females	28
8 Live births, by weeks of gestation and geography	30
8-1 Both sexes	30
8-2 Males	32
8-3 Females	34

## Table of contents – continued

9	Live births, by characteristics of the mother and child, Canada	36
9-1	Birth weight indicators	36
9-2	Weeks of gestation indicators	37
10	Live births, by place of residence of mother and place of occurrence, Canada, provinces, territories and outside Canada	38
11	Fetal deaths (20 weeks or more of gestation) and late fetal deaths (28 weeks or more of gestation), Canada, provinces and territories	39
12	Live births and fetal deaths (stillbirths), by geography	39
12-1	Type of birth (single or multiple)	39
12-2	Place of birth (hospital and non-hospital)	40

## Data quality, concepts and methodology

Definitions	42
Explanatory notes for the tables	45

## Appendix

I	Postcensal Population Estimates	50
---	---------------------------------	----

## Charts

1.	Births and total fertility rates, Canada, 1987 to 2007	7
2.	Age-specific fertility rates, Canada 1987 to 2007	10
3.	Age structure of fertility rate, Canada, 1997 and 2007	11
4.	Births, Canada, 1921 to 2007	13

## Text tables

1.	Births, Canada, provinces and territories, 2006 and 2007	8
2.	Total Fertility Rate by Geography, Canada, 2006 and 2007	9
3.	Expected number of births in 2007 by age group, Canada	12
4.	Total fertility rates, selected countries, 2004 to 2007	14

# Highlights

---

## Births and fertility continuing an upward trend

- In 2007, a total of 367,864 births were registered in Canada, the largest number since 1995 (378,016).
- Births continued an upward trend that began in 2002. From 2006 to 2007, the annual birth increase was 3.7%, the highest growth since 1989.
- There was a noticeable increase in the total fertility rate, or the average number of children per woman, which rose from 1.59 in 2006 to 1.66 in 2007.
- The recent increase in births could be explained partly by a rise in fertility rates, predominantly by women aged 30 to 34 and by the fact that many women from the echo generation had entered their childbearing years.
- In 2007, 49% of total births were from mothers aged 30 to 44, which was 4% more births than in 2006.

## Women postponing childbearing

- The period between 1987 and 2007 saw an overall decline in the fertility rate of Canadian women in their twenties, while that of women in their thirties increased steadily.
- In 2007, for a second consecutive year, the age-specific fertility rate of women aged 30 to 34 was higher than women aged 25 to 29, widening the gap between these two age groups.

## Births are up in almost every part of Canada

- From 2006 to 2007, the number of births rose in all provinces and territories except Prince Edward Island and Yukon.
- In 2007, four provinces accounted for 83% of the total increase in births. Alberta was the largest contributor with almost 30% of the total increase, followed by Ontario (21%), Quebec (18%) and British Columbia (14%).

## Stillbirths and stillbirth rate trends

- The number of stillbirths (or fetal deaths) in Canada was 2,637 in 2007, an increase of 16% from 2006.
- From 2006 to 2007, the stillbirth rate went up from 6.4 per 1,000 total births (live births and stillbirths) to 7.1.

# Introduction

---

This product presents statistical tables showing the number of live births and fetal deaths (stillbirths) of at least 20 weeks' gestation; total and age-specific fertility rates and crude birth rates; live births by age of mother and live birth order; male and female birth weights; weeks of gestation at the time of birth; and multiple births. Numbers are shown for Canada, the ten provinces and the three territories.

## History note

Births - Shelf tables (84F0210X) data for 2000 and 2001 were released in the year 2003 in paper format. Since April 2004, this product is available on the Internet under the title "Births" (84F0210X).

The "Births, 2004" publication had two volumes. Volume 1 reported on live births and Volume 2 reported on fetal deaths (stillbirths).

## CANSIM data

Free access to data is provided through a special CANSIM interface. The CANSIM tables can be linked directly from three different locations in the HTML product:

### Tables section:

- Related CANSIM tables
- Individual tables, in the Source

### Related products section:

- Selected CANSIM tables from Statistics Canada



# Analysis

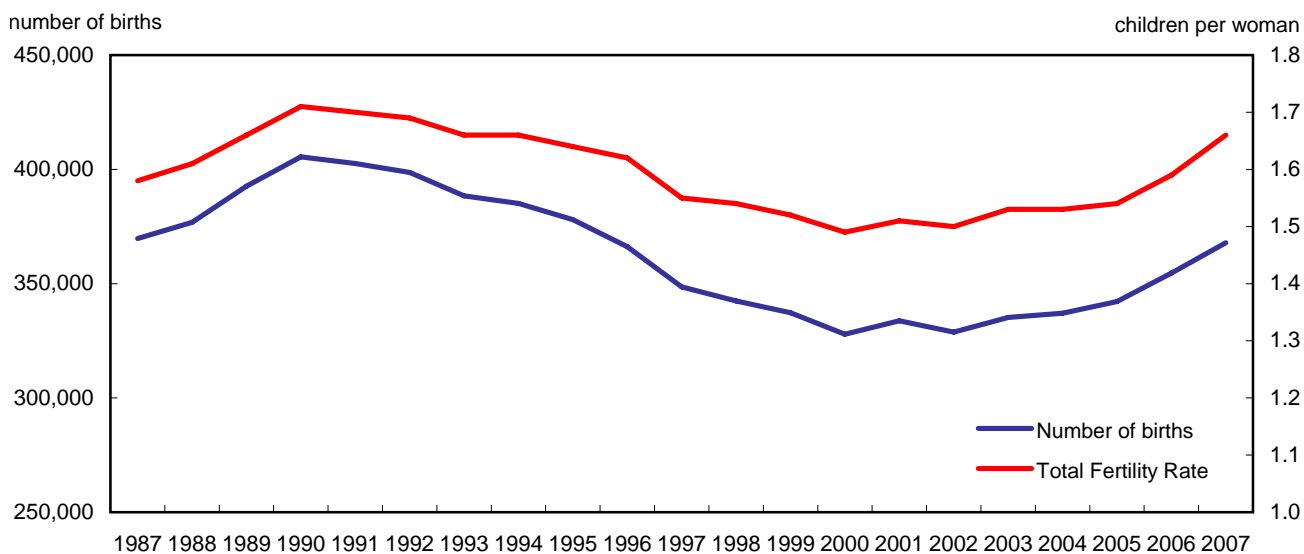
## A. Number of births

In 2007, 367,864 births were registered in Canada, the largest number of births since 1995 (378,016) and the highest annual increase (3.7%) since 1989 (4.2%).

### A.1. Trends in births

Over the past 20 years, Canada has seen both upward and downward trends in the number of births (Chart 1). After peaking in 1990, the number of births fell steadily throughout the 1990s. In 2000, almost 328,000 births were registered—the lowest number since the end of the Second World War. With the exception of 2002, there was an upward trend in the number of births since 2000. In the most recent years, there was a sharp increase in annual births: 3.6% in 2006 and 3.7% in 2007.

Chart 1  
Births and total fertility rates, Canada, 1987 to 2007



Source(s): Statistics Canada, CANSIM table 102-4502 and 102-4505 and *Vital Statistics Compendium*, 1996, catalogue no. 84-214-XPE.

### A.2. Geographic differences

From 2006 to 2007, the number of births rose in all provinces and territories except Prince Edward Island and Yukon (Table 1). In 2007, four provinces accounted for 83% of the total increase in births. Alberta was the largest contributor with almost 30% of the total increase, followed by Ontario (21%), Quebec (18%) and British Columbia (14%).

The largest relative increases occurred in Alberta, Saskatchewan and Nunavut.

**Text table 1**  
**Births, Canada, provinces and territories, 2006 and 2007**

Place of residence of mother	2006		2007		Difference	
	number		number		percent	
Canada	354,617	367,864	13,247		3.7	
Newfoundland and Labrador	4,542	4,553	11		0.2	
Prince Edward Island	1,413	1,389	-24		-1.7	
Nova Scotia	8,485	8,868	383		4.5	
New Brunswick	7,030	7,146	116		1.7	
Quebec	81,937	84,387	2,450		3.0	
Ontario	135,595	138,436	2,841		2.1	
Manitoba	14,565	15,285	720		4.9	
Saskatchewan	12,288	13,248	960		7.8	
Alberta	45,229	49,028	3,799		8.4	
British Columbia	41,729	43,649	1,920		4.6	
Yukon	364	355	-9		-2.5	
Northwest Territories	687	725	38		5.5	
Nunavut	747	794	47		6.3	

Source(s): Statistics Canada, CANSIM table 102-4502.

## B. Fertility

The total fertility rate (TFR) is the sum of single-year, age-specific fertility rates during a given year. It represents the average number of children that a woman would have if the current age-specific fertility rates prevail over her reproductive period.

### B.1. General trends in fertility

The TFR was 1.66 children per woman in 2007, up 4% from the previous year (Table 2). This is the highest TFR recorded since 1992, when it was 1.69, and the largest annual increase since 1957 (during the baby boom years). However, this TFR is still well below the generational replacement level of 2.1 children per woman—the fertility rate that must be maintained to replace the population in the absence of migration. The last year that the total fertility rate exceeded the generational replacement level was 1971.<sup>1</sup>

Closely paralleling the trend in births, the TFR fell throughout the 1990s and then began climbing in 2001 (Chart 1). The drop in the TFR (and in the number of births) in 2000, and the quick recovery in 2001, may have been related to a desire to have a baby in the first year of the new millennium. The number of marriages also increased in 2000.<sup>2</sup>

In 2007, Nunavut had the highest fertility in the country, with a TFR of 2.97 children per woman, ensuring the generational replacement level. In contrast, Newfoundland and Labrador had the lowest TFR with 1.46 children per woman in 2007.

Other provinces with a TFR lower than the national average of 1.66 children per woman were Prince Edward Island, Yukon, Ontario, New Brunswick, British Columbia and Nova Scotia. On the other hand, Saskatchewan had the highest total fertility rate, 2.03 children per woman in 2007.

1. Statistics Canada. 2008. *Report on the Demographic Situation in Canada, 2005 and 2006*, Catalogue no. 91-209-X.

2. Statistics Canada. 2007. "Marriages, 2003." *The Daily*. January 17.

**Text table 2**  
**Total Fertility Rate<sup>1</sup> by Geography, Canada, 2006 and 2007**

Geography	2006	2007	Difference
Canada	1.59	1.66	0.07
Newfoundland and Labrador	1.38	1.46	0.07
Prince Edward Island	1.56	1.63	0.07
Nova Scotia	1.40	1.48	0.08
New Brunswick	1.46	1.52	0.07
Quebec	1.62	1.69	0.07
Ontario	1.52	1.57	0.05
Manitoba	1.87	1.96	0.09
Saskatchewan	1.92	2.03	0.11
Alberta	1.82	1.90	0.09
British Columbia	1.41	1.52	0.11
Yukon	1.69	1.58	-0.11
Northwest Territories	2.07	2.11	0.04
Nunavut	2.84	2.97	0.13

1. Number of children per woman.

Source(s): Statistics Canada, CANSIM table 102-4505.

From 2006 to 2007, the TFR rose in all provinces and territories except Yukon. The largest increase was observed in Nunavut, with an average of 0.13 children per woman more than in 2006. On the other hand, the smallest increase, 0.04 children per woman, was in the Northwest Territories. Five other provinces (British Columbia, Saskatchewan, Manitoba, Alberta and Nova Scotia) had larger increases in TFR than the national level and four provinces had the same level of increase as Canada. Ontario was the only province where the rise in TFR was less than the national level.

## B.2. Age of mother and age-specific fertility rate

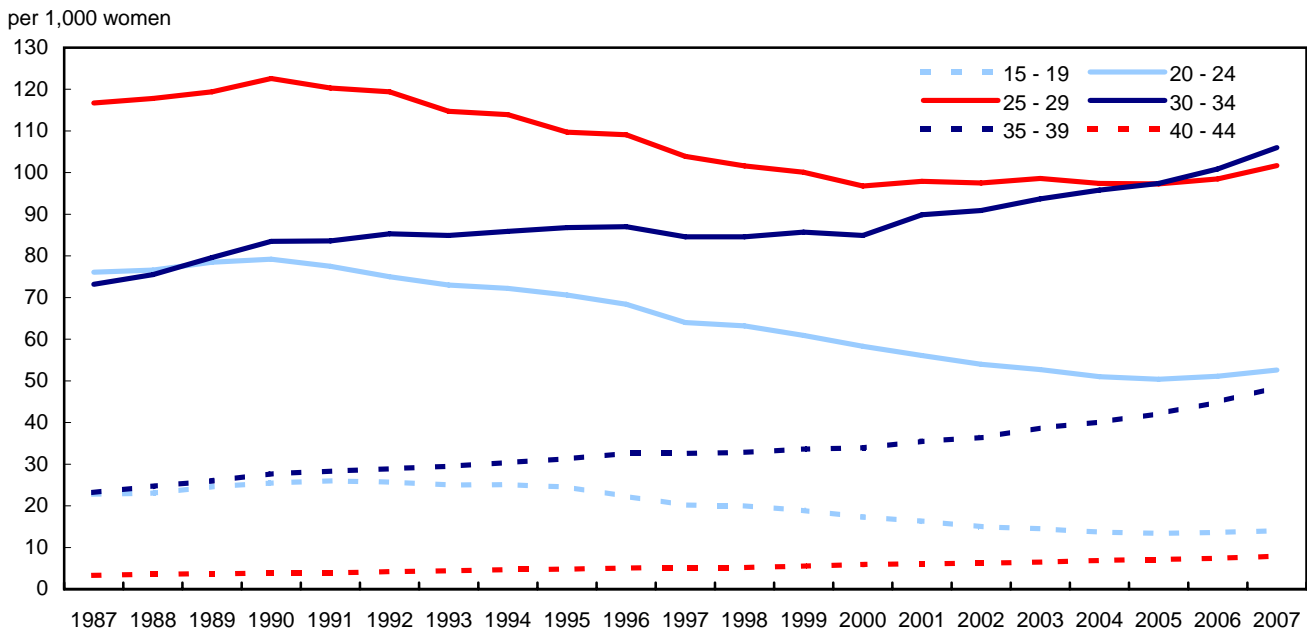
Fertility rates increased in all age groups in 2007. From 2006 to 2007, changes in age-specific fertility rates differed from region to region.<sup>3</sup> However, fertility rates for women aged less than 35 years rose in all provinces, except Prince Edward Island for women aged 20 to 24.

Among the 10 provinces, the highest fertility rate for mothers aged 15 to 29 occurred in Saskatchewan in 2007. For women aged 30 to 34, the fertility rate was highest in Alberta. Ontario had the highest fertility rate for women aged 35 to 39 and British Columbia for women aged 40 to 49.

Over the past 20 years, there have been significant changes in the age-specific fertility rates in Canada (Chart 2). The decades between 1987 and 2007 saw an overall decline in the fertility rate of Canadian women in their twenties, while that of women in their thirties increased steadily. In 2006, the fertility rate of women aged 30 to 34 surpassed the fertility rate of those aged 25 to 29.

3. Statistics Canada. CANSIM table 102-4505.

**Chart 2**  
**Age-specific fertility rates, Canada 1987 to 2007**



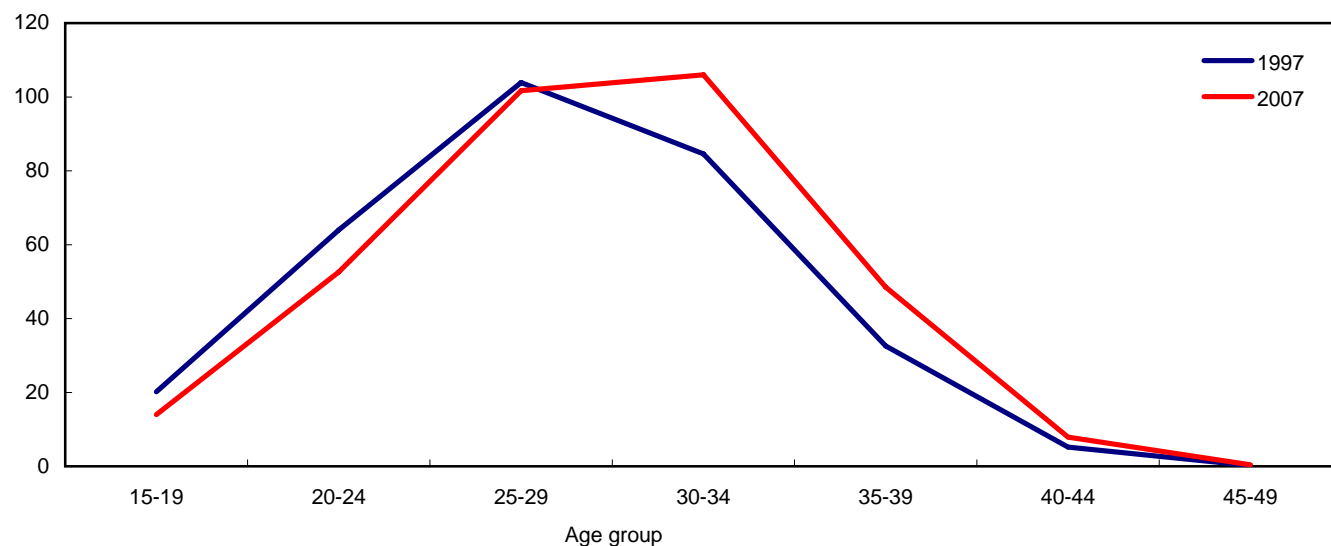
Source(s): Statistics Canada, CANSIM table 102-4502 and 102-4505 and *Births*, Catalogue no. 84-210-X.

In the last 10 years, there was an important shift in the age structure of fertility (Chart 3). In 1997, the age-specific fertility rate peaked among women aged 25 to 29. Ten years later, the highest fertility rate had shifted to women aged 30 to 34.

In 2007, the age-specific fertility rate was highest for mothers aged 30 to 34 (106 per 1,000 females) for a second consecutive year and their rate was the highest since 1965 (119 per 1,000). In addition, from 2006 to 2007, the increase in the age-specific fertility rate of women aged 30 to 34 was larger than for those aged 25 to 29, widening the gap between these two age groups.

**Chart 3**  
**Age structure of fertility rate, Canada, 1997 and 2007**

per 1,000 females



**Source(s):** Statistics Canada, CANSIM table 102-4502 and *Births and Deaths*, 1997, Catalogue no. 84-210-X.

### B.3. Analysing 2007 fertility rate

Two factors could account for the increases in the number of births in recent years: an increase in the number of women of reproductive age and a rise in fertility rates.

By applying age-specific fertility rates (ASFRs) for 2006 to the female population in 2007 (Table 3), it is possible to estimate how much of the increase in births in 2007 can be attributed to changes in the size of the population compared with changes in fertility rates.

**Text table 3**  
**Expected number of births in 2007 by age group, Canada**

Age Group	2006PD ASFR <sup>1,2</sup>	2007 female population (PR)	Expected births <sup>3</sup>	2007 ASFR <sup>1</sup>	Difference 2006-2007 ASFR <sup>4</sup>	2006 female population (PD)	Difference 2006-2007 female population
15 to 19	13.5	1,089,315	14,743	14.0	0.5	1,074,916	14,399
20 to 24	51.4	1,105,812	56,816	52.6	1.2	1,098,510	7,302
25 to 29	100.4	1,107,611	111,185	101.7	1.3	1,085,328	22,283
30 to 34	103.2	1,088,614	112,339	106.0	2.8	1,078,746	9,868
35 to 39	45.7	1,144,484	52,353	48.5	2.8	1,149,729	-5,245
40 to 44	7.4	1,312,012	9,693	7.9	0.5	1,345,339	-33,327
45 to 49	0.3	1,349,672	429	0.4	0.1	1,333,389	16,283
Total	10.9	8,197,520	357,558			8,165,957	31,563

1. Births per 1,000 women.

2. 2006 revised age specific fertility rate using 2006 PD population estimates as denominator.

3. Expected births for 2007, obtained by applying 2006 revised age-specific fertility rates to the 2007 female population.

4. Difference between 2006 and 2007 age-specific fertility rates.

**Note(s):** ASFR = age-specific fertility rate, PD = final postcensal, PR = updated postcensal.

**Source(s):** Statistics Canada, CANSIM Table 102-4505 and Appendix 1 of "Births" publication, catalogue no. 84F0210X.

If there had been no change in age-specific fertility rates from 2006 to 2007, the expected number of births in 2007 would have been 357,558 (Table 3), or 2,941 more births than in 2006. In fact, from 2006 to 2007, there was an increase of 13,247 births. The additional 10,306 births can, therefore, be attributed to changes in fertility.

In 2007, the number of potential childbearers aged 30 to 44 were mainly from the baby buster generation (see section C). From 2006 to 2007, this smaller cohort of women (aged 30 to 44) increased their fertility and, as a result, gave birth to 181,250 babies, which represented 49% of total births in 2007 and 7,397 more births than in 2006.

## C. Echoes of the baby boom

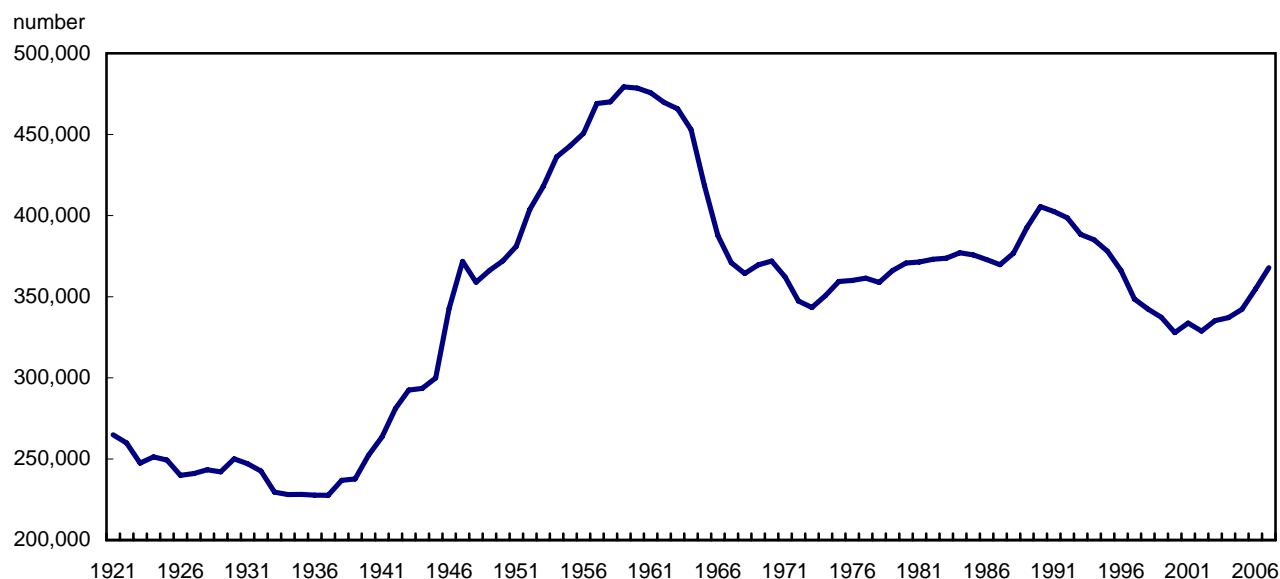
The period of time from the end of the Second World War to the mid-1960s witnessed a dramatic increase in the fertility rates, the result of which was the baby boom phenomenon.

### C.1. Historical trends

In 1947, when the TFR was 3.6 children per woman—the highest rate since 1921<sup>4</sup>— the number of births totalled 372,600, and the crude birth rate was 28.9 per 1,000 population (Chart 4).

4. Statistics Canada. Selected Birth and Fertility Statistics, Canada, 1921 to 1990. Catalogue 82-553. Occasional.

**Chart 4**  
**Births, Canada, 1921 to 2007**



**Source(s):** Statistics Canada, CANSIM table 102-4502, *Births*, Catalogue no. 84-210-X and *Selected Historical Statistics, Canada, 1921-1990*, Catalogue no. 82-553-X Occasional.

At the height of the baby boom in 1959, when the TFR was 3.9 children per woman, annual births exceeded 479,000—the highest number recorded since comparable Canada-wide vital statistics were first compiled in 1921.

The annual number of births remained high for a few more years, and then dropped sharply starting in 1964. This period of low numbers of births, known as the baby bust,<sup>5</sup> lasted for approximately 10 years until the mid-1970s, reaching its lowest level in 1973.

## C.2. Echo generation

The first baby boom 'echo'<sup>6</sup> was expected in the mid-1970s, approximately 25 years after the beginning of the baby boom. But while there was a sizeable increase in the number of births in 1974 and 1975, gains in the following years were relatively modest. Only in the late 1980s (1988 to 1990) was there a substantial rise in the number of births (Chart 4).

From 1988 to 1995, Canada experienced a clear baby-boom echo as the baby boomers had a large number of births, peaking at 405,486 in 1990. Thereafter, annual births dropped, falling to 327,882 in 2000, which was less than the lowest number in the baby bust period.

Over the past five years, Canada has seen a continuous upward trend in the number of births. The recent increase in births could be explained partly by the fact that many women from the echo generation have entered their childbearing years and by the fertility rates that had edged up from 1.50 children per woman in 2002 to 1.66 in 2007.

5. Romaniuc, Anatole. 1984. *Fertility in Canada: From Baby-boom to Baby-bust*. Statistics Canada Catalogue no. 91-524-XPE. Ottawa, Ontario.

6. Demency, Paul and Geoffrey McNicoll, editors. 2003. *Encyclopedia of Population*. Vol.1. New York, U.S.A. MacMillan Reference. p. 73.

### C.3. Comparison with other low-fertility countries

Low fertility rate is a phenomenon that Canada shares with many countries. The rising number of births in Canada parallels trends in several other of these countries, which have also experienced an upturn in fertility in recent years (Table 4).

From 2004 to 2007, the TFR increased in all 10 selected countries. Until 2006, the rise in fertility in Canada was modest. However, from 2006 to 2007, following Australia and Czech Republic, Canada registered the third-highest increase in TFR among the 10 countries.

**Text table 4**  
**Total fertility rates<sup>1</sup>, selected countries, 2004 to 2007**

Country	2004	2005	2006	2007
Spain	1.33	1.35	1.38	1.40
Greece	1.30	1.33	1.40	1.41
Czech Republic	1.23	1.28	1.33	1.44
<b>Canada</b>	<b>1.53</b>	<b>1.54</b>	<b>1.59</b>	<b>1.66</b>
Denmark	1.78	1.80	1.85	1.85
Sweden	1.76	1.77	1.86	1.88
United Kingdom	1.78	1.80	1.84	1.90
Norway	1.83	1.84	1.90	1.90
Australia	1.76	1.79	1.82	1.93
France	1.92	1.94	2.00	1.98

1. Number of children per woman.

Source(s): National Statistics Offices and Eurostat.

## D. Change in stillbirths

The number of stillbirths (or fetal deaths) in Canada was 2,637 in 2007, an increase of 365 stillbirths (16%) from 2006.

The stillbirth rate also went up from 6.4 per 1,000 total births (live births and stillbirths) in 2006 to 7.1 in 2007.

### D.1. Trends in stillbirth rates

Since 1991, stillbirth rates have fluctuated around 6.0 per 1,000 total births until 2006. In 2007, stillbirths edged up to 7.1 per 1,000 total births, an increase of 10% from the previous year. In contrast, the late stillbirth rate (fetal deaths at 28 or more weeks of gestation) peaked at 3.8 per 1,000 in 1992, and has since decreased to 2.9 in 2005, but rose slightly to 3.2 in 2007.



## Related products

---

### Selected publications from Statistics Canada

---

82-221-X	Health indicators
82-223-X	Induced abortion statistics
82-224-X	Pregnancy outcomes

---

### Selected CANSIM tables from Statistics Canada

---

102-4501	Live births, by place of residence of mother and place of occurrence, Canada, provinces, territories and outside Canada
102-4502	Live births, by month, Canada, provinces and territories
102-4503	Live births, by age of mother, Canada, provinces and territories
102-4504	Mean age of mother at time of delivery (live births), Canada, provinces and territories
102-4505	Crude birth rate, age-specific and total fertility rates (live births), Canada, provinces and territories
102-4506	Live births, by marital status of mother, Canada, provinces and territories
102-4507	Live births, by age and marital status of mother, Canada
102-4508	Live births, by age and parity of mother, Canada
102-4509	Live births, by birth weight and sex, Canada, provinces and territories
102-4510	Mean and median birth weight (live births), by sex, Canada, provinces and territories
102-4511	Live births, birth weight indicators, by characteristics of the mother and child, Canada
102-4512	Live births, by weeks of gestation and sex, Canada, provinces and territories
102-4513	Live births, weeks of gestation indicators, by characteristics of the mother and child, Canada
102-4514	Fetal deaths (20 weeks or more of gestation) and late fetal deaths (28 weeks or more of gestation), Canada, provinces and territories
102-4515	Live births and fetal deaths (stillbirths), by type (single or multiple), Canada, provinces and territories
102-4516	Live births and fetal deaths (stillbirths), by place of birth (hospital and non-hospital), Canada, provinces and territories

---

## **Selected surveys from Statistics Canada**

---

3231	Vital Statistics - Birth Database ( <a href="http://www.statcan.gc.ca/english/sdds/3231.htm">www.statcan.gc.ca/english/sdds/3231.htm</a> )
3234	Vital Statistics - Stillbirth Database ( <a href="http://www.statcan.gc.ca/english/sdds/3234.htm">www.statcan.gc.ca/english/sdds/3234.htm</a> )
3604	Estimates of Population by Age and Sex for Canada, Provinces and Territories ( <a href="http://www.statcan.gc.ca/english/sdds/3604.htm">www.statcan.gc.ca/english/sdds/3604.htm</a> )

---

## **Selected tables of Canadian statistics from Statistics Canada**

---

- *Births and birth rate, by provinces and territories*
- *Deaths and death rate, by provinces and territories*
- *Components of population growth, by province and territory*
- *Infant mortality rates, by province and territory*
- *Induced abortions by age group*
- *Pregnancy outcomes by province or territory of residence*
- *Pregnancy outcomes by age group*

# Statistical tables

---

---

**Table 1**  
**Live births, by sex and geography**

Place of residence of mother	number			percent		
	Both sexes	Males	Females	Both sexes	Males	Females
<b>Canada</b>	<b>367,864</b>	<b>188,337</b>	<b>179,527</b>	<b>100.0</b>	<b>100.0</b>	<b>100.0</b>
Newfoundland and Labrador	4,553	2,323	2,230	1.2	1.2	1.2
Prince Edward Island	1,389	673	716	0.4	0.4	0.4
Nova Scotia	8,868	4,562	4,306	2.4	2.4	2.4
New Brunswick	7,146	3,703	3,443	1.9	2.0	1.9
Quebec	84,387	43,244	41,143	22.9	23.0	22.9
Ontario	138,436	70,811	67,625	37.6	37.6	37.7
Manitoba	15,285	7,813	7,472	4.2	4.1	4.2
Saskatchewan	13,248	6,769	6,479	3.6	3.6	3.6
Alberta	49,028	24,965	24,063	13.3	13.3	13.4
British Columbia	43,649	22,527	21,122	11.9	12.0	11.8
Yukon	355	186	169	0.1	0.1	0.1
Northwest Territories	725	368	357	0.2	0.2	0.2
Nunavut	794	393	401	0.2	0.2	0.2
Unknown	1	0	1	0.0	0.0	0.0

**Note(s):** See "Data quality, concepts and methodology — Explanatory notes for the tables".

**Source(s):** Statistics Canada, Canadian Vital Statistics, Birth Database (CANSIM table 102-4512).

**Table 2-1**  
**Live births, by geography — Month**

Place of residence of mother	number													
	Total	January	February	March	April	May	June	July	August	September	October	November	December	
<b>Canada</b>	<b>367,864</b>	<b>29,080</b>	<b>26,959</b>	<b>30,371</b>	<b>29,978</b>	<b>31,779</b>	<b>31,581</b>	<b>32,352</b>	<b>32,990</b>	<b>32,093</b>	<b>31,750</b>	<b>29,701</b>	<b>29,230</b>	
Newfoundland and Labrador	4,553	389	315	397	362	380	377	410	407	405	400	352	359	
Prince Edward Island	1,389	109	108	120	103	114	127	117	116	117	129	115	114	
Nova Scotia	8,868	634	648	712	746	811	740	772	756	858	793	724	674	
New Brunswick	7,146	555	528	597	571	613	614	630	687	628	632	566	525	
Quebec	84,387	6,701	6,122	6,962	6,906	7,251	7,287	7,381	7,668	7,401	7,295	6,797	6,616	
Ontario	138,436	10,872	10,214	11,490	11,300	11,781	11,851	12,237	12,452	11,998	11,850	11,248	11,143	
Manitoba	15,285	1,238	1,158	1,224	1,209	1,289	1,323	1,393	1,381	1,349	1,349	1,208	1,164	
Saskatchewan	13,248	1,064	965	1,075	1,077	1,172	1,121	1,141	1,185	1,184	1,124	1,051	1,089	
Alberta	49,028	3,931	3,601	4,112	4,003	4,423	4,186	4,324	4,178	4,175	4,221	3,967	3,907	
British Columbia	43,649	3,421	3,154	3,533	3,544	3,788	3,791	3,778	3,989	3,810	3,807	3,531	3,503	
Yukon	355	21	32	22	35	35	34	30	33	29	25	35	24	
Northwest Territories	725	69	62	61	56	56	58	69	72	69	49	50	54	
Nunavut	794	76	52	65	66	66	72	70	66	70	76	57	58	
Unknown	1	0	0	1	0	0	0	0	0	0	0	0	0	
		percent												
<b>Canada</b>	<b>100.0</b>	<b>7.9</b>	<b>7.3</b>	<b>8.3</b>	<b>8.1</b>	<b>8.6</b>	<b>8.6</b>	<b>8.8</b>	<b>9.0</b>	<b>8.7</b>	<b>8.6</b>	<b>8.1</b>	<b>7.9</b>	
Newfoundland and Labrador	100.0	8.5	6.9	8.7	8.0	8.3	8.3	9.0	8.9	8.9	8.8	7.7	7.9	
Prince Edward Island	100.0	7.8	7.8	8.6	7.4	8.2	9.1	8.4	8.4	8.4	9.3	8.3	8.2	
Nova Scotia	100.0	7.1	7.3	8.0	8.4	9.1	8.3	8.7	8.5	9.7	8.9	8.2	7.6	
New Brunswick	100.0	7.8	7.4	8.4	8.0	8.6	8.6	8.8	9.6	8.8	8.8	7.9	7.3	
Quebec	100.0	7.9	7.3	8.3	8.2	8.6	8.6	8.7	9.1	8.8	8.6	8.1	7.8	
Ontario	100.0	7.9	7.4	8.3	8.2	8.5	8.6	8.8	9.0	8.7	8.6	8.1	8.0	
Manitoba	100.0	8.1	7.6	8.0	7.9	8.4	8.7	9.1	9.0	8.8	8.8	7.9	7.6	
Saskatchewan	100.0	8.0	7.3	8.1	8.1	8.8	8.5	8.6	8.9	8.9	8.5	7.9	8.2	
Alberta	100.0	8.0	7.3	8.4	8.2	9.0	8.5	8.8	8.5	8.5	8.6	8.1	8.0	
British Columbia	100.0	7.8	7.2	8.1	8.1	8.7	8.7	8.7	9.1	8.7	8.7	8.1	8.0	
Yukon	100.0	5.9	9.0	6.2	9.9	9.9	9.6	8.5	9.3	8.2	7.0	9.9	6.8	
Northwest Territories	100.0	9.5	8.6	8.4	7.7	7.7	8.0	9.5	9.9	9.5	6.8	6.9	7.4	
Nunavut	100.0	9.6	6.5	8.2	8.3	8.3	9.1	8.8	8.3	8.8	9.6	7.2	7.3	
Unknown	100.0	0.0	0.0	100.0	0.0	0.0	0.0	0.0	0.0	0.0	0.0	0.0	0.0	

**Note(s):** See "Data quality, concepts and methodology — Explanatory notes for the tables".

**Source(s):** Statistics Canada, Canadian Vital Statistics, Birth Database (CANSIM table 102-4502).

**Table 2-2**  
**Live births, by geography — Age of mother**

Place of residence of mother	Age of mother 1									
	All ages	Under 15 years	15 to 19 years	20 to 24 years	25 to 29 years	30 to 34 years	35 to 39 years	40 to 44 years	45 to 49 years	Not stated 2
	number									
<b>Canada</b>	<b>367,864</b>	<b>119</b>	<b>15,161</b>	<b>58,165</b>	<b>112,614</b>	<b>115,415</b>	<b>55,486</b>	<b>10,349</b>	<b>505</b>	<b>50</b>
Newfoundland and Labrador	4,553	2	275	908	1,378	1,365	549	70	6	0
Prince Edward Island	1,389	0	85	261	413	424	180	25	1	0
Nova Scotia	8,868	2	514	1,643	2,644	2,685	1,184	192	4	0
New Brunswick	7,146	4	466	1,565	2,343	1,948	707	106	3	4
Quebec	84,387	9	2,326	12,687	29,891	26,531	10,879	1,985	73	6
Ontario	138,436	25	4,636	18,483	38,679	47,180	24,535	4,636	238	24
Manitoba	15,285	17	1,363	3,354	4,548	3,934	1,723	324	20	2
Saskatchewan	13,248	18	1,296	3,109	4,369	3,080	1,183	178	8	7
Alberta	49,028	27	2,482	9,245	15,718	14,038	6,321	1,145	48	4
British Columbia	43,649	11	1,456	6,410	12,161	13,829	8,033	1,647	99	3
Yukon	355	0	18	56	106	113	50	12	0	0
Northwest Territories	725	0	65	173	196	178	93	17	3	0
Nunavut	794	4	179	270	168	110	49	12	2	0
Unknown	1	0	0	1	0	0	0	0	0	0
	percent									
<b>Canada</b>	<b>100.0</b>	<b>0.0</b>	<b>4.1</b>	<b>15.8</b>	<b>30.6</b>	<b>31.4</b>	<b>15.1</b>	<b>2.8</b>	<b>0.1</b>	<b>0.0</b>
Newfoundland and Labrador	100.0	0.0	6.0	19.9	30.3	30.0	12.1	1.5	0.1	0.0
Prince Edward Island	100.0	0.0	6.1	18.8	29.7	30.5	13.0	1.8	0.1	0.0
Nova Scotia	100.0	0.0	5.8	18.5	29.8	30.3	13.4	2.2	0.0	0.0
New Brunswick	100.0	0.1	6.5	21.9	32.8	27.3	9.9	1.5	0.0	0.1
Quebec	100.0	0.0	2.8	15.0	35.4	31.4	12.9	2.4	0.1	0.0
Ontario	100.0	0.0	3.3	13.4	27.9	34.1	17.7	3.3	0.2	0.0
Manitoba	100.0	0.1	8.9	21.9	29.8	25.7	11.3	2.1	0.1	0.0
Saskatchewan	100.0	0.1	9.8	23.5	33.0	23.2	8.9	1.3	0.1	0.1
Alberta	100.0	0.1	5.1	18.9	32.1	28.6	12.9	2.3	0.1	0.0
British Columbia	100.0	0.0	3.3	14.7	27.9	31.7	18.4	3.8	0.2	0.0
Yukon	100.0	0.0	5.1	15.8	29.9	31.8	14.1	3.4	0.0	0.0
Northwest Territories	100.0	0.0	9.0	23.9	27.0	24.6	12.8	2.3	0.4	0.0
Nunavut	100.0	0.5	22.5	34.0	21.2	13.9	6.2	1.5	0.3	0.0
Unknown	100.0	0.0	0.0	100.0	0.0	0.0	0.0	0.0	0.0	0.0

1. Age of mother attained at the last birthday preceding delivery.

2. For confidentiality reasons, live births to mothers aged 50 and over are included in the category "Age of mother, not stated." Where information is unavailable on the birth mother of children who are adopted, these records are included in the category "Age of mother, not stated."

**Note(s):** See "Data quality, concepts and methodology — Explanatory notes for the tables".

**Source(s):** Statistics Canada, Canadian Vital Statistics, Birth Database (CANSIM table 102-4503).

**Table 2-3**  
**Live births, by geography — Marital status of mother**

Place of residence of mother	Marital status of mother						Not stated
	Total	Single (never married)	Married	Widowed	Divorced	Separated	
	number						
<b>Canada</b>	<b>367,864</b>	<b>96,436</b>	<b>226,608</b>	<b>238</b>	<b>3,673</b>	<b>1,336</b>	<b>39,573</b>
Newfoundland and Labrador	4,553	2,017	2,389	5	64	0	78
Prince Edward Island	1,389	492	888	0	6	1	2
Nova Scotia	8,868	3,661	5,021	9	129	1	47
New Brunswick	7,146	3,144	3,687	6	141	148	20
Quebec	84,387	50,251	32,059	86	1,285	270	436
Ontario	138,436	16,025	101,769	71	911	8	19,652
Manitoba	15,285	5,930	8,810	14	266	223	42
Saskatchewan	13,248	5,536	6,948	12	218	1	533
Alberta <sup>1</sup>	49,028	323	34,252	0	11	3	14,439
British Columbia	43,649	7,882	30,172	34	635	664	4,262
Yukon	355	167	185	0	0	0	3
Northwest Territories	725	411	273	0	5	8	28
Nunavut	794	596	155	1	2	9	31
Unknown	1	1	0	0	0	0	0
	percent						
<b>Canada</b>	<b>100.0</b>	<b>26.2</b>	<b>61.6</b>	<b>0.1</b>	<b>1.0</b>	<b>0.4</b>	<b>10.8</b>
Newfoundland and Labrador	100.0	44.3	52.5	0.1	1.4	0.0	1.7
Prince Edward Island	100.0	35.4	63.9	0.0	0.4	0.1	0.1
Nova Scotia	100.0	41.3	56.6	0.1	1.5	0.0	0.5
New Brunswick	100.0	44.0	51.6	0.1	2.0	2.1	0.3
Quebec	100.0	59.5	38.0	0.1	1.5	0.3	0.5
Ontario	100.0	11.6	73.5	0.1	0.7	0.0	14.2
Manitoba	100.0	38.8	57.6	0.1	1.7	1.5	0.3
Saskatchewan	100.0	41.8	52.4	0.1	1.6	0.0	4.0
Alberta <sup>1</sup>	100.0	0.7	69.9	0.0	0.0	0.0	29.5
British Columbia	100.0	18.1	69.1	0.1	1.5	1.5	9.8
Yukon	100.0	47.0	52.1	0.0	0.0	0.0	0.8
Northwest Territories	100.0	56.7	37.7	0.0	0.7	1.1	3.9
Nunavut	100.0	75.1	19.5	0.1	0.3	1.1	3.9
Unknown	100.0	100.0	0.0	0.0	0.0	0.0	0.0

1. Partway through 2003, Alberta Registries amended their Registration of Birth form in such a way that Statistics Canada can no longer determine the legal marital status of those persons in common-law marriages.

**Note(s):** See "Data quality, concepts and methodology — Explanatory notes for the tables".

**Source(s):** Statistics Canada, Canadian Vital Statistics, Birth Database (CANSIM table 102-4506).

**Table 3**  
**Mean age of mother<sup>1</sup>, by geography**

Place of residence of mother	Mean age of mother
	years
<b>Canada</b>	<b>29.3</b>
Newfoundland and Labrador	28.3
Prince Edward Island	28.6
Nova Scotia	28.7
New Brunswick	27.8
Quebec	29.2
Ontario	30.0
Manitoba	27.7
Saskatchewan	27.1
Alberta	28.6
British Columbia	29.9
Yukon	29.2
Northwest Territories	27.8
Nunavut	24.7
Unknown	20.0

1. Mean age of mother for Canada, a province or a territory is calculated by summing the mothers' ages at their last birthday preceding delivery and then dividing the sum by the total number of live births in that jurisdiction. To estimate mid-year mean age, a statistic often used in analyses, add 0.5 to the mean age in this table.

**Note(s):** See "Data quality, concepts and methodology — Explanatory notes for the tables".

**Source(s):** Statistics Canada, Canadian Vital Statistics, Birth Database (CANSIM table 102-4504).

**Table 4**  
**Crude birth rate, age-specific and total fertility rates, by geography**

Place of residence of mother	Age specific fertility rate <sup>1,2</sup>							Crude birth rate, live births	Total fertility rate <sup>4</sup>
	15 to 19 years <sup>3</sup>	20 to 24 years	25 to 29 years	30 to 34 years	35 to 39 years	40 to 44 years	45 to 49 years		
	rate per 1,000 females								
<b>Canada</b>	<b>14.0</b>	<b>52.6</b>	<b>101.7</b>	<b>106.0</b>	<b>48.5</b>	<b>7.9</b>	<b>0.4</b>	<b>11.2</b>	<b>1,658.9</b>
Newfoundland and Labrador	17.0	57.8	95.7	85.8	29.5	3.3	0.3	9.0	1,455.1
Prince Edward Island	17.0	57.4	100.4	104.8	40.5	4.7	0.2	10.1	1,633.2
Nova Scotia	16.5	53.3	90.9	92.4	37.2	5.1	0.1	9.5	1,481.7
New Brunswick	19.8	67.7	103.9	81.5	27.9	3.6	0.1	9.6	1,523.8
Quebec	9.7	53.1	114.8	108.7	43.9	6.6	0.2	11.0	1,686.1
Ontario	10.8	42.6	90.7	108.0	52.6	8.8	0.5	10.9	1,573.9
Manitoba	31.9	82.1	118.7	106.1	45.2	7.5	0.4	12.9	1,962.9
Saskatchewan	35.2	86.8	133.6	104.0	40.6	5.1	0.2	13.3	2,028.4
Alberta	20.9	69.3	118.9	112.1	50.9	8.5	0.3	14.0	1,903.4
British Columbia	10.7	44.4	84.9	99.6	52.2	9.6	0.6	10.2	1,515.2
Yukon	16.6	51.8	104.6	94.7	39.6	8.3	0.0	10.9	1,580.2
Northwest Territories	35.7	108.5	100.5	110.9	56.1	9.8	1.8	16.7	2,112.3
Nunavut	116.7	195.4	125.1	98.1	42.1	12.1	2.6	25.4	2,972.8

1. Age of mother attained at the last birthday preceding delivery.

2. Age-specific fertility rate (ASFR) is the number of live births per 1,000 females in a specific age group. Five-year age groups were used in these tabulations (ranging from 15 to 19 years to 45 to 49 years).

3. Live births to females under 20 years of age per 1,000 females aged 15 to 19.

4. Total fertility rate is an estimate of the average number of live births a female can be expected to have in her lifetime, based on the age-specific fertility rates (ASFR) of a given year. The total fertility rate (TFR) = SUM of single year of age-specific fertility rates.

**Note(s):** See "Data quality, concepts and methodology — Explanatory notes for the tables".

**Source(s):** Statistics Canada, Canadian Vital Statistics, Birth Database (CANSIM table 102-4505) and Appendix I.

**Table 5**  
**Mean and median birth weight, by geography**

Place of residence of mother	Birth weight					
	Both sexes		Males		Females	
	Mean <sup>1</sup>	Median <sup>2</sup>	Mean <sup>1</sup>	Median <sup>2</sup>	Mean <sup>1</sup>	Median <sup>2</sup>
grams						
<b>Canada</b>	<b>3,372</b>	<b>3,400</b>	<b>3,429</b>	<b>3,460</b>	<b>3,313</b>	<b>3,340</b>
Newfoundland and Labrador	3,459	3,490	3,522	3,555	3,393	3,410
Prince Edward Island	3,450	3,487	3,508	3,550	3,396	3,430
Nova Scotia	3,423	3,459	3,482	3,515	3,361	3,402
New Brunswick	3,426	3,445	3,475	3,500	3,374	3,395
Quebec	3,355	3,380	3,414	3,450	3,293	3,315
Ontario	3,360	3,390	3,416	3,450	3,302	3,330
Manitoba	3,444	3,458	3,501	3,515	3,384	3,402
Saskatchewan	3,441	3,470	3,501	3,530	3,378	3,405
Alberta	3,348	3,382	3,405	3,446	3,289	3,320
British Columbia	3,391	3,419	3,444	3,475	3,334	3,360
Yukon	3,428	3,470	3,486	3,539	3,365	3,410
Northwest Territories	3,556	3,544	3,604	3,572	3,506	3,515
Nunavut	3,371	3,400	3,449	3,460	3,294	3,344
Unknown	2,799	2,799	0	0	2,799	2,799

1. Mean birth weight is calculated for Canada, a province or a territory by summing the first weight of each newborn (obtained immediately after birth) and then dividing the sum by the total number of live births in that jurisdiction.
2. Median birth weight refers to the middle value birth weight when newborns' birth weight is ranked from lightest to heaviest. In the case of an even number of observations, the median is the arithmetic average of the two middle values.

**Note(s):** See "Data quality, concepts and methodology — Explanatory notes for the tables".

**Source(s):** Statistics Canada, Canadian Vital Statistics, Birth Database (CANSIM table 102-4510).

**Table 6-1**  
**Live births, Canada — Age and marital status of mother**

Marital status of mother	Age of mother <sup>1</sup>									
	All ages	Under 15 years	15 to 19 years	20 to 24 years	25 to 29 years	30 to 34 years	35 to 39 years	40 to 44 years	45 to 49 years	Not stated <sup>2</sup>
	number									
<b>Total <sup>3</sup></b>	<b>367,864</b>	<b>119</b>	<b>15,161</b>	<b>58,165</b>	<b>112,614</b>	<b>115,415</b>	<b>55,486</b>	<b>10,349</b>	<b>505</b>	<b>50</b>
Single (never married)	96,436	115	9,884	26,370	31,466	19,877	7,275	1,392	52	5
Married	226,608	0	955	19,212	69,296	86,501	42,680	7,560	372	32
Widowed	238	0	1	22	55	76	58	26	0	0
Divorced	3,673	0	3	114	677	1,360	1,163	337	19	0
Separated	1,336	0	16	200	385	407	240	80	8	0
Not stated	39,573	4	4,302	12,247	10,735	7,194	4,070	954	54	13
	percent									
<b>Total <sup>3</sup></b>	<b>100.0</b>	<b>100.0</b>	<b>100.0</b>	<b>100.0</b>	<b>100.0</b>	<b>100.0</b>	<b>100.0</b>	<b>100.0</b>	<b>100.0</b>	<b>100.0</b>
Single (never married)	26.2	96.6	65.2	45.3	27.9	17.2	13.1	13.5	10.3	10.0
Married	61.6	0.0	6.3	33.0	61.5	74.9	76.9	73.1	73.7	64.0
Widowed	0.1	0.0	0.0	0.0	0.0	0.1	0.1	0.3	0.0	0.0
Divorced	1.0	0.0	0.0	0.2	0.6	1.2	2.1	3.3	3.8	0.0
Separated	0.4	0.0	0.1	0.3	0.3	0.4	0.4	0.8	1.6	0.0
Not stated	10.8	3.4	28.4	21.1	9.5	6.2	7.3	9.2	10.7	26.0

1. Age of mother attained at the last birthday preceding delivery.
2. For confidentiality reasons, live births to mothers aged 50 and over are included in the category "Age of mother, not stated." Where information is unavailable on the birth mother of children who are adopted, these records are included in the category "Age of mother, not stated."
3. Partway through 2003, Alberta Registries amended their Registration of Birth form in such a way that Statistics Canada can no longer determine the legal marital status of those persons in common-law marriages.

**Note(s):** See "Data quality, concepts and methodology — Explanatory notes for the tables".

**Source(s):** Statistics Canada, Canadian Vital Statistics, Birth Database (CANSIM table 102-4507).



**Table 6-2**  
**Live births, Canada — Age and parity of mother**

Parity of mother	Age of mother <sup>1</sup>									
	All ages	Under 15 years	15 to 19 years	20 to 24 years	25 to 29 years	30 to 34 years	35 to 39 years	40 to 44 years	45 to 49 years	Not stated <sup>2</sup>
	number									
<b>Total</b>	<b>367,864</b>	<b>119</b>	<b>15,161</b>	<b>58,165</b>	<b>112,614</b>	<b>115,415</b>	<b>55,486</b>	<b>10,349</b>	<b>505</b>	<b>50</b>
First live birth	163,446	116	12,901	35,190	55,085	41,963	15,397	2,604	165	25
Second live birth	129,886	3	2,048	16,882	38,005	46,531	22,634	3,648	124	11
Third live birth	48,970	0	195	4,640	13,269	17,954	10,736	2,084	86	6
Fourth live birth	15,652	0	13	1,105	4,115	5,577	3,872	928	38	4
Fifth live birth	5,450	0	0	289	1,411	1,888	1,399	428	35	0
Sixth live birth	2,203	0	0	42	495	775	656	216	19	0
Seventh live birth	1,043	0	0	9	173	375	337	144	3	2
Eighth live birth	553	0	0	0	39	208	203	96	7	0
Ninth live birth	276	0	0	0	13	79	108	68	6	2
Tenth live birth or more	348	0	0	0	3	54	140	129	22	0
Not stated	37	0	4	8	6	11	4	4	0	0
	percent									
<b>Total</b>	<b>100.0</b>	<b>100.0</b>	<b>100.0</b>	<b>100.0</b>	<b>100.0</b>	<b>100.0</b>	<b>100.0</b>	<b>100.0</b>	<b>100.0</b>	<b>100.0</b>
First live birth	44.4	97.5	85.1	60.5	48.9	36.4	27.7	25.2	32.7	50.0
Second live birth	35.3	2.5	13.5	29.0	33.7	40.3	40.8	35.2	24.6	22.0
Third live birth	13.3	0.0	1.3	8.0	11.8	15.6	19.3	20.1	17.0	12.0
Fourth live birth	4.3	0.0	0.1	1.9	3.7	4.8	7.0	9.0	7.5	8.0
Fifth live birth	1.5	0.0	0.0	0.5	1.3	1.6	2.5	4.1	6.9	0.0
Sixth live birth	0.6	0.0	0.0	0.1	0.4	0.7	1.2	2.1	3.8	0.0
Seventh live birth	0.3	0.0	0.0	0.0	0.2	0.3	0.6	1.4	0.6	4.0
Eighth live birth	0.2	0.0	0.0	0.0	0.0	0.2	0.4	0.9	1.4	0.0
Ninth live birth	0.1	0.0	0.0	0.0	0.0	0.1	0.2	0.7	1.2	4.0
Tenth live birth or more	0.1	0.0	0.0	0.0	0.0	0.0	0.3	1.2	4.4	0.0
Not stated	0.0	0.0	0.0	0.0	0.0	0.0	0.0	0.0	0.0	0.0

1. Age of mother attained at the last birthday preceding delivery.

2. For confidentiality reasons, live births to mothers aged 50 and over are included in the category "Age of mother, not stated." Where information is unavailable on the birth mother of children who are adopted, these records are included in the category "Age of mother, not stated."

**Note(s):** See "Data quality, concepts and methodology — Explanatory notes for the tables".

**Source(s):** Statistics Canada, Canadian Vital Statistics, Birth Database (CANSIM table 102-4508).

**Table 7-1**  
**Live births, by birth weight and geography — Both sexes**

Birth weight	Place of residence of mother						
	Canada	Newfoundland and Labrador	Prince Edward Island	Nova Scotia	New Brunswick	Quebec	Ontario
	number						
<b>Total</b>	<b>367,864</b>	<b>4,553</b>	<b>1,389</b>	<b>8,868</b>	<b>7,146</b>	<b>84,387</b>	<b>138,436</b>
<b>Less than 500 grams</b>	<b>336</b>	<b>14</b>	<b>1</b>	<b>8</b>	<b>7</b>	<b>92</b>	<b>74</b>
<b>500 to 1,499 grams</b>	<b>3,284</b>	<b>34</b>	<b>16</b>	<b>70</b>	<b>57</b>	<b>698</b>	<b>1,285</b>
500 to 749 grams	591	6	1	12	13	123	213
750 to 999 grams	712	6	4	15	16	169	274
1,000 to 1,249 grams	863	7	5	19	12	186	342
1,250 to 1,499 grams	1,118	15	6	24	16	220	456
<b>1,500 to 2,499 grams</b>	<b>18,481</b>	<b>197</b>	<b>64</b>	<b>431</b>	<b>286</b>	<b>4,033</b>	<b>7,267</b>
1,500 to 1,749 grams	1,600	18	5	46	25	320	618
1,750 to 1,999 grams	2,635	16	14	60	32	588	1,038
2,000 to 2,249 grams	4,921	57	17	98	79	1,021	1,973
2,250 to 2,499 grams	9,325	106	28	227	150	2,104	3,638
<b>2,500 to 4,499 grams</b>	<b>338,763</b>	<b>4,158</b>	<b>1,259</b>	<b>8,140</b>	<b>6,610</b>	<b>78,360</b>	<b>127,381</b>
2,500 to 2,749 grams	18,889	183	53	394	333	4,325	7,504
2,750 to 2,999 grams	37,694	390	128	751	640	8,992	14,506
3,000 to 3,249 grams	61,054	639	172	1,384	1,145	14,703	23,208
3,250 to 3,499 grams	73,038	856	272	1,717	1,394	17,337	27,555
3,500 to 3,749 grams	66,388	826	268	1,675	1,309	15,366	24,606
3,750 to 3,999 grams	45,692	681	194	1,268	967	10,196	16,815
4,000 to 4,249 grams	24,673	399	120	611	568	5,264	9,030
4,250 to 4,499 grams	11,335	184	52	340	254	2,177	4,157
<b>4,500 grams or more</b>	<b>6,887</b>	<b>144</b>	<b>47</b>	<b>218</b>	<b>184</b>	<b>1,170</b>	<b>2,416</b>
4,500 to 4,749 grams	4,483	83	26	148	132	788	1,539
4,750 to 4,999 grams	1,617	41	11	38	30	265	607
5,000 to 5,249 grams	530	16	8	20	12	81	186
5,250 to 5,499 grams	164	3	1	8	5	21	53
5,500 grams or more	93	1	1	4	5	15	31
<b>Not stated</b>	<b>113</b>	<b>6</b>	<b>2</b>	<b>1</b>	<b>2</b>	<b>34</b>	<b>13</b>
	percent						
<b>Total</b>	<b>100.0</b>	<b>100.0</b>	<b>100.0</b>	<b>100.0</b>	<b>100.0</b>	<b>100.0</b>	<b>100.0</b>
<b>Less than 500 grams</b>	<b>0.1</b>	<b>0.3</b>	<b>0.1</b>	<b>0.1</b>	<b>0.1</b>	<b>0.1</b>	<b>0.1</b>
<b>500 to 1,499 grams</b>	<b>0.9</b>	<b>0.7</b>	<b>1.2</b>	<b>0.8</b>	<b>0.8</b>	<b>0.8</b>	<b>0.9</b>
500 to 749 grams	0.2	0.1	0.1	0.1	0.2	0.1	0.2
750 to 999 grams	0.2	0.1	0.3	0.2	0.2	0.2	0.2
1,000 to 1,249 grams	0.2	0.2	0.4	0.2	0.2	0.2	0.2
1,250 to 1,499 grams	0.3	0.3	0.4	0.3	0.2	0.3	0.3
<b>1,500 to 2,499 grams</b>	<b>5.0</b>	<b>4.3</b>	<b>4.6</b>	<b>4.9</b>	<b>4.0</b>	<b>4.8</b>	<b>5.2</b>
1,500 to 1,749 grams	0.4	0.4	0.4	0.5	0.3	0.4	0.4
1,750 to 1,999 grams	0.7	0.4	1.0	0.7	0.4	0.7	0.7
2,000 to 2,249 grams	1.3	1.3	1.2	1.1	1.1	1.2	1.4
2,250 to 2,499 grams	2.5	2.3	2.0	2.6	2.1	2.5	2.6
<b>2,500 to 4,499 grams</b>	<b>92.1</b>	<b>91.3</b>	<b>90.6</b>	<b>91.8</b>	<b>92.5</b>	<b>92.9</b>	<b>92.0</b>
2,500 to 2,749 grams	5.1	4.0	3.8	4.4	4.7	5.1	5.4
2,750 to 2,999 grams	10.2	8.6	9.2	8.5	9.0	10.7	10.5
3,000 to 3,249 grams	16.6	14.0	12.4	15.6	16.0	17.4	16.8
3,250 to 3,499 grams	19.9	18.8	19.6	19.4	19.5	20.5	19.9
3,500 to 3,749 grams	18.0	18.1	19.3	18.9	18.3	18.2	17.8
3,750 to 3,999 grams	12.4	15.0	14.0	14.3	13.5	12.1	12.1
4,000 to 4,249 grams	6.7	8.8	8.6	6.9	7.9	6.2	6.5
4,250 to 4,499 grams	3.1	4.0	3.7	3.8	3.6	2.6	3.0
<b>4,500 grams or more</b>	<b>1.9</b>	<b>3.2</b>	<b>3.4</b>	<b>2.5</b>	<b>2.6</b>	<b>1.4</b>	<b>1.7</b>
4,500 to 4,749 grams	1.2	1.8	1.9	1.7	1.8	0.9	1.1
4,750 to 4,999 grams	0.4	0.9	0.8	0.4	0.4	0.3	0.4
5,000 to 5,249 grams	0.1	0.4	0.6	0.2	0.2	0.1	0.1
5,250 to 5,499 grams	0.0	0.1	0.1	0.1	0.1	0.0	0.0
5,500 grams or more	0.0	0.0	0.1	0.0	0.1	0.0	0.0
<b>Not stated</b>	<b>0.0</b>	<b>0.1</b>	<b>0.1</b>	<b>0.0</b>	<b>0.0</b>	<b>0.0</b>	<b>0.0</b>

Table 7-1 – continued

## Live births, by birth weight and geography — Both sexes

Birth weight	Place of residence of mother								
	Canada	Manitoba	Saskatchewan	Alberta	British Columbia	Yukon	Northwest Territories	Nunavut	Unknown
	number								
<b>Total</b>	<b>367,864</b>	<b>15,285</b>	<b>13,248</b>	<b>49,028</b>	<b>43,649</b>	<b>355</b>	<b>725</b>	<b>794</b>	<b>1</b>
<b>Less than 500 grams</b>	<b>336</b>	<b>22</b>	<b>6</b>	<b>78</b>	<b>34</b>	<b>0</b>	<b>0</b>	<b>0</b>	<b>0</b>
<b>500 to 1,499 grams</b>	<b>3,284</b>	<b>121</b>	<b>95</b>	<b>477</b>	<b>408</b>	<b>3</b>	<b>8</b>	<b>12</b>	<b>0</b>
500 to 749 grams	591	29	20	100	71	2	0	1	0
750 to 999 grams	712	27	17	96	85	0	0	3	0
1,000 to 1,249 grams	863	32	28	116	109	0	5	2	0
1,250 to 1,499 grams	1,118	33	30	165	143	1	3	6	0
<b>1,500 to 2,499 grams</b>	<b>18,481</b>	<b>713</b>	<b>629</b>	<b>2,700</b>	<b>2,081</b>	<b>20</b>	<b>23</b>	<b>37</b>	<b>0</b>
1,500 to 1,749 grams	1,600	66	64	259	177	0	2	0	0
1,750 to 1,999 grams	2,635	106	96	387	284	4	3	7	0
2,000 to 2,249 grams	4,921	172	175	734	570	6	6	13	0
2,250 to 2,499 grams	9,325	369	294	1,320	1,050	10	12	17	0
<b>2,500 to 4,499 grams</b>	<b>338,763</b>	<b>13,952</b>	<b>12,118</b>	<b>44,881</b>	<b>40,201</b>	<b>324</b>	<b>656</b>	<b>722</b>	<b>1</b>
2,500 to 2,749 grams	18,889	694	600	2,638	2,094	13	18	40	0
2,750 to 2,999 grams	37,694	1,301	1,154	5,291	4,383	30	42	85	1
3,000 to 3,249 grams	61,054	2,309	1,965	8,186	7,079	49	86	129	0
3,250 to 3,499 grams	73,038	2,894	2,461	9,651	8,519	66	155	161	0
3,500 to 3,749 grams	66,388	2,757	2,499	8,729	8,000	77	135	141	0
3,750 to 3,999 grams	45,692	2,124	1,831	5,871	5,484	52	117	92	0
4,000 to 4,249 grams	24,673	1,176	1,081	3,120	3,160	25	70	49	0
4,250 to 4,499 grams	11,335	697	527	1,395	1,482	12	33	25	0
<b>4,500 grams or more</b>	<b>6,887</b>	<b>474</b>	<b>400</b>	<b>891</b>	<b>875</b>	<b>8</b>	<b>38</b>	<b>22</b>	<b>0</b>
4,500 to 4,749 grams	4,483	300	255	598	572	5	22	15	0
4,750 to 4,999 grams	1,617	113	97	195	204	1	12	3	0
5,000 to 5,249 grams	530	32	29	72	68	1	1	4	0
5,250 to 5,499 grams	164	16	12	21	22	1	1	0	0
5,500 grams or more	93	13	7	5	9	0	2	0	0
<b>Not stated</b>	<b>113</b>	<b>3</b>	<b>0</b>	<b>1</b>	<b>50</b>	<b>0</b>	<b>0</b>	<b>1</b>	<b>0</b>
	percent								
<b>Total</b>	<b>100.0</b>	<b>100.0</b>	<b>100.0</b>	<b>100.0</b>	<b>100.0</b>	<b>100.0</b>	<b>100.0</b>	<b>100.0</b>	<b>100.0</b>
<b>Less than 500 grams</b>	<b>0.1</b>	<b>0.1</b>	<b>0.0</b>	<b>0.2</b>	<b>0.1</b>	<b>0.0</b>	<b>0.0</b>	<b>0.0</b>	<b>0.0</b>
<b>500 to 1,499 grams</b>	<b>0.9</b>	<b>0.8</b>	<b>0.7</b>	<b>1.0</b>	<b>0.9</b>	<b>0.8</b>	<b>1.1</b>	<b>1.5</b>	<b>0.0</b>
500 to 749 grams	0.2	0.2	0.2	0.2	0.2	0.6	0.0	0.1	0.0
750 to 999 grams	0.2	0.2	0.1	0.2	0.2	0.0	0.0	0.4	0.0
1,000 to 1,249 grams	0.2	0.2	0.2	0.2	0.2	0.0	0.7	0.3	0.0
1,250 to 1,499 grams	0.3	0.2	0.2	0.3	0.3	0.3	0.4	0.8	0.0
<b>1,500 to 2,499 grams</b>	<b>5.0</b>	<b>4.7</b>	<b>4.7</b>	<b>5.5</b>	<b>4.8</b>	<b>5.6</b>	<b>3.2</b>	<b>4.7</b>	<b>0.0</b>
1,500 to 1,749 grams	0.4	0.4	0.5	0.5	0.4	0.0	0.3	0.0	0.0
1,750 to 1,999 grams	0.7	0.7	0.7	0.8	0.7	1.1	0.4	0.9	0.0
2,000 to 2,249 grams	1.3	1.1	1.3	1.5	1.3	1.7	0.8	1.6	0.0
2,250 to 2,499 grams	2.5	2.4	2.2	2.7	2.4	2.8	1.7	2.1	0.0
<b>2,500 to 4,499 grams</b>	<b>92.1</b>	<b>91.3</b>	<b>91.5</b>	<b>91.5</b>	<b>92.1</b>	<b>91.3</b>	<b>90.5</b>	<b>90.9</b>	<b>100.0</b>
2,500 to 2,749 grams	5.1	4.5	4.5	5.4	4.8	3.7	2.5	5.0	0.0
2,750 to 2,999 grams	10.2	8.5	8.7	10.8	10.0	8.5	5.8	10.7	100.0
3,000 to 3,249 grams	16.6	15.1	14.8	16.7	16.2	13.8	11.9	16.2	0.0
3,250 to 3,499 grams	19.9	18.9	18.6	19.7	19.5	18.6	21.4	20.3	0.0
3,500 to 3,749 grams	18.0	18.0	18.9	17.8	18.3	21.7	18.6	17.8	0.0
3,750 to 3,999 grams	12.4	13.9	13.8	12.0	12.6	14.6	16.1	11.6	0.0
4,000 to 4,249 grams	6.7	7.7	8.2	6.4	7.2	7.0	9.7	6.2	0.0
4,250 to 4,499 grams	3.1	4.6	4.0	2.8	3.4	3.4	4.6	3.1	0.0
<b>4,500 grams or more</b>	<b>1.9</b>	<b>3.1</b>	<b>3.0</b>	<b>1.8</b>	<b>2.0</b>	<b>2.3</b>	<b>5.2</b>	<b>2.8</b>	<b>0.0</b>
4,500 to 4,749 grams	1.2	2.0	1.9	1.2	1.3	1.4	3.0	1.9	0.0
4,750 to 4,999 grams	0.4	0.7	0.7	0.4	0.5	0.3	1.7	0.4	0.0
5,000 to 5,249 grams	0.1	0.2	0.2	0.1	0.2	0.3	0.1	0.5	0.0
5,250 to 5,499 grams	0.0	0.1	0.1	0.0	0.1	0.3	0.1	0.0	0.0
5,500 grams or more	0.0	0.1	0.1	0.0	0.0	0.0	0.3	0.0	0.0
<b>Not stated</b>	<b>0.0</b>	<b>0.0</b>	<b>0.0</b>	<b>0.0</b>	<b>0.1</b>	<b>0.0</b>	<b>0.0</b>	<b>0.1</b>	<b>0.0</b>

**Note(s):** See "Data quality, concepts and methodology — Explanatory notes for the tables".

**Source(s):** Statistics Canada, Canadian Vital Statistics, Birth Database (CANSIM table 102-4509).

**Table 7-2**  
**Live births, by birth weight and geography — Males**

Birth weight	Place of residence of mother						
	Canada	Newfoundland and Labrador	Prince Edward Island	Nova Scotia	New Brunswick	Quebec	Ontario
	number						
<b>Total</b>	<b>188,337</b>	<b>2,323</b>	<b>673</b>	<b>4,562</b>	<b>3,703</b>	<b>43,244</b>	<b>70,811</b>
<b>Less than 500 grams</b>	<b>168</b>	<b>7</b>	<b>0</b>	<b>7</b>	<b>5</b>	<b>42</b>	<b>42</b>
<b>500 to 1,499 grams</b>	<b>1,683</b>	<b>11</b>	<b>11</b>	<b>32</b>	<b>29</b>	<b>370</b>	<b>668</b>
500 to 749 grams	287	2	1	4	8	54	107
750 to 999 grams	375	3	3	6	6	103	134
1,000 to 1,249 grams	455	3	3	10	7	107	184
1,250 to 1,499 grams	566	3	4	12	8	106	243
<b>1,500 to 2,499 grams</b>	<b>8,735</b>	<b>92</b>	<b>30</b>	<b>206</b>	<b>137</b>	<b>1,876</b>	<b>3,443</b>
1,500 to 1,749 grams	822	9	3	20	15	162	310
1,750 to 1,999 grams	1,280	9	6	29	18	278	498
2,000 to 2,249 grams	2,348	29	8	47	35	496	967
2,250 to 2,499 grams	4,285	45	13	110	69	940	1,668
<b>2,500 to 4,499 grams</b>	<b>173,066</b>	<b>2,122</b>	<b>598</b>	<b>4,163</b>	<b>3,403</b>	<b>40,161</b>	<b>65,029</b>
2,500 to 2,749 grams	8,252	80	29	168	143	1,854	3,305
2,750 to 2,999 grams	16,624	171	45	350	271	3,956	6,309
3,000 to 3,249 grams	28,145	314	72	618	572	6,591	10,863
3,250 to 3,499 grams	36,092	374	121	843	691	8,708	13,632
3,500 to 3,749 grams	35,334	433	121	887	704	8,325	13,068
3,750 to 3,999 grams	26,156	389	96	715	539	5,967	9,624
4,000 to 4,249 grams	15,113	240	78	363	334	3,324	5,503
4,250 to 4,499 grams	7,350	121	36	219	149	1,436	2,725
<b>4,500 grams or more</b>	<b>4,624</b>	<b>87</b>	<b>32</b>	<b>153</b>	<b>127</b>	<b>777</b>	<b>1,626</b>
4,500 to 4,749 grams	3,013	51	20	105	91	523	1,049
4,750 to 4,999 grams	1,085	24	7	25	20	179	397
5,000 to 5,249 grams	343	10	4	15	9	50	120
5,250 to 5,499 grams	119	2	1	6	4	12	38
5,500 grams or more	64	0	0	2	3	13	22
<b>Not stated</b>	<b>61</b>	<b>4</b>	<b>2</b>	<b>1</b>	<b>2</b>	<b>18</b>	<b>3</b>
	percent						
<b>Total</b>	<b>100.0</b>	<b>100.0</b>	<b>100.0</b>	<b>100.0</b>	<b>100.0</b>	<b>100.0</b>	<b>100.0</b>
<b>Less than 500 grams</b>	<b>0.1</b>	<b>0.3</b>	<b>0.0</b>	<b>0.2</b>	<b>0.1</b>	<b>0.1</b>	<b>0.1</b>
<b>500 to 1,499 grams</b>	<b>0.9</b>	<b>0.5</b>	<b>1.6</b>	<b>0.7</b>	<b>0.8</b>	<b>0.9</b>	<b>0.9</b>
500 to 749 grams	0.2	0.1	0.1	0.1	0.2	0.1	0.2
750 to 999 grams	0.2	0.1	0.4	0.1	0.2	0.2	0.2
1,000 to 1,249 grams	0.2	0.1	0.4	0.2	0.2	0.2	0.3
1,250 to 1,499 grams	0.3	0.1	0.6	0.3	0.2	0.2	0.3
<b>1,500 to 2,499 grams</b>	<b>4.6</b>	<b>4.0</b>	<b>4.5</b>	<b>4.5</b>	<b>3.7</b>	<b>4.3</b>	<b>4.9</b>
1,500 to 1,749 grams	0.4	0.4	0.4	0.4	0.4	0.4	0.4
1,750 to 1,999 grams	0.7	0.4	0.9	0.6	0.5	0.6	0.7
2,000 to 2,249 grams	1.2	1.2	1.2	1.0	0.9	1.1	1.4
2,250 to 2,499 grams	2.3	1.9	1.9	2.4	1.9	2.2	2.4
<b>2,500 to 4,499 grams</b>	<b>91.9</b>	<b>91.3</b>	<b>88.9</b>	<b>91.3</b>	<b>91.9</b>	<b>92.9</b>	<b>91.8</b>
2,500 to 2,749 grams	4.4	3.4	4.3	3.7	3.9	4.3	4.7
2,750 to 2,999 grams	8.8	7.4	6.7	7.7	7.3	9.1	8.9
3,000 to 3,249 grams	14.9	13.5	10.7	13.5	15.4	15.2	15.3
3,250 to 3,499 grams	19.2	16.1	18.0	18.5	18.7	20.1	19.3
3,500 to 3,749 grams	18.8	18.6	18.0	19.4	19.0	19.3	18.5
3,750 to 3,999 grams	13.9	16.7	14.3	15.7	14.6	13.8	13.6
4,000 to 4,249 grams	8.0	10.3	11.6	8.0	9.0	7.7	7.8
4,250 to 4,499 grams	3.9	5.2	5.3	4.8	4.0	3.3	3.8
<b>4,500 grams or more</b>	<b>2.5</b>	<b>3.7</b>	<b>4.8</b>	<b>3.4</b>	<b>3.4</b>	<b>1.8</b>	<b>2.3</b>
4,500 to 4,749 grams	1.6	2.2	3.0	2.3	2.5	1.2	1.5
4,750 to 4,999 grams	0.6	1.0	1.0	0.5	0.5	0.4	0.6
5,000 to 5,249 grams	0.2	0.4	0.6	0.3	0.2	0.1	0.2
5,250 to 5,499 grams	0.1	0.1	0.1	0.1	0.1	0.0	0.1
5,500 grams or more	0.0	0.0	0.0	0.0	0.1	0.0	0.0
<b>Not stated</b>	<b>0.0</b>	<b>0.2</b>	<b>0.3</b>	<b>0.0</b>	<b>0.1</b>	<b>0.0</b>	<b>0.0</b>

Table 7-2 – continued

## Live births, by birth weight and geography — Males

Birth weight	Place of residence of mother								
	Canada	Manitoba	Saskatchewan	Alberta	British Columbia	Yukon	Northwest Territories	Nunavut	Unknown
	number								
<b>Total</b>	<b>188,337</b>	<b>7,813</b>	<b>6,769</b>	<b>24,965</b>	<b>22,527</b>	<b>186</b>	<b>368</b>	<b>393</b>	<b>0</b>
<b>Less than 500 grams</b>	<b>168</b>	<b>14</b>	<b>1</b>	<b>39</b>	<b>11</b>	<b>0</b>	<b>0</b>	<b>0</b>	<b>0</b>
<b>500 to 1,499 grams</b>	<b>1,683</b>	<b>61</b>	<b>36</b>	<b>230</b>	<b>224</b>	<b>3</b>	<b>2</b>	<b>6</b>	<b>0</b>
500 to 749 grams	287	17	2	49	41	2	0	0	0
750 to 999 grams	375	13	10	50	46	0	0	1	0
1,000 to 1,249 grams	455	15	15	52	58	0	0	1	0
1,250 to 1,499 grams	566	16	9	79	79	1	2	4	0
<b>1,500 to 2,499 grams</b>	<b>8,735</b>	<b>335</b>	<b>316</b>	<b>1,257</b>	<b>1,004</b>	<b>11</b>	<b>13</b>	<b>15</b>	<b>0</b>
1,500 to 1,749 grams	822	39	36	142	84	0	2	0	0
1,750 to 1,999 grams	1,280	54	50	190	143	3	0	2	0
2,000 to 2,249 grams	2,348	81	86	311	276	3	4	5	0
2,250 to 2,499 grams	4,285	161	144	614	501	5	7	8	0
<b>2,500 to 4,499 grams</b>	<b>173,066</b>	<b>7,077</b>	<b>6,149</b>	<b>22,850</b>	<b>20,661</b>	<b>168</b>	<b>329</b>	<b>356</b>	<b>0</b>
2,500 to 2,749 grams	8,252	302	253	1,157	936	3	8	14	0
2,750 to 2,999 grams	16,624	587	517	2,353	2,003	12	16	34	0
3,000 to 3,249 grams	28,145	1,052	878	3,783	3,278	20	40	64	0
3,250 to 3,499 grams	36,092	1,408	1,207	4,709	4,216	33	78	72	0
3,500 to 3,749 grams	35,334	1,406	1,299	4,695	4,211	34	72	79	0
3,750 to 3,999 grams	26,156	1,174	1,039	3,345	3,120	39	62	47	0
4,000 to 4,249 grams	15,113	708	623	1,898	1,958	19	34	31	0
4,250 to 4,499 grams	7,350	440	333	910	939	8	19	15	0
<b>4,500 grams or more</b>	<b>4,624</b>	<b>324</b>	<b>267</b>	<b>589</b>	<b>598</b>	<b>4</b>	<b>24</b>	<b>16</b>	<b>0</b>
4,500 to 4,749 grams	3,013	207	163	385	390	4	14	11	0
4,750 to 4,999 grams	1,085	81	69	136	136	0	8	3	0
5,000 to 5,249 grams	343	16	21	49	47	0	0	2	0
5,250 to 5,499 grams	119	13	9	15	18	0	1	0	0
5,500 grams or more	64	7	5	4	7	0	1	0	0
<b>Not stated</b>	<b>61</b>	<b>2</b>	<b>0</b>	<b>0</b>	<b>29</b>	<b>0</b>	<b>0</b>	<b>0</b>	<b>0</b>
	percent								
<b>Total</b>	<b>100.0</b>	<b>100.0</b>	<b>100.0</b>	<b>100.0</b>	<b>100.0</b>	<b>100.0</b>	<b>100.0</b>	<b>100.0</b>	<b>0.0</b>
<b>Less than 500 grams</b>	<b>0.1</b>	<b>0.2</b>	<b>0.0</b>	<b>0.2</b>	<b>0.0</b>	<b>0.0</b>	<b>0.0</b>	<b>0.0</b>	<b>0.0</b>
<b>500 to 1,499 grams</b>	<b>0.9</b>	<b>0.8</b>	<b>0.5</b>	<b>0.9</b>	<b>1.0</b>	<b>1.6</b>	<b>0.5</b>	<b>1.5</b>	<b>0.0</b>
500 to 749 grams	0.2	0.2	0.0	0.2	0.2	1.1	0.0	0.0	0.0
750 to 999 grams	0.2	0.2	0.1	0.2	0.2	0.0	0.0	0.3	0.0
1,000 to 1,249 grams	0.2	0.2	0.2	0.2	0.3	0.0	0.0	0.3	0.0
1,250 to 1,499 grams	0.3	0.2	0.1	0.3	0.4	0.5	0.5	1.0	0.0
<b>1,500 to 2,499 grams</b>	<b>4.6</b>	<b>4.3</b>	<b>4.7</b>	<b>5.0</b>	<b>4.5</b>	<b>5.9</b>	<b>3.5</b>	<b>3.8</b>	<b>0.0</b>
1,500 to 1,749 grams	0.4	0.5	0.5	0.6	0.4	0.0	0.5	0.0	0.0
1,750 to 1,999 grams	0.7	0.7	0.7	0.8	0.6	1.6	0.0	0.5	0.0
2,000 to 2,249 grams	1.2	1.0	1.3	1.2	1.2	1.6	1.1	1.3	0.0
2,250 to 2,499 grams	2.3	2.1	2.1	2.5	2.2	2.7	1.9	2.0	0.0
<b>2,500 to 4,499 grams</b>	<b>91.9</b>	<b>90.6</b>	<b>90.8</b>	<b>91.5</b>	<b>91.7</b>	<b>90.3</b>	<b>89.4</b>	<b>90.6</b>	<b>0.0</b>
2,500 to 2,749 grams	4.4	3.9	3.7	4.6	4.2	1.6	2.2	3.6	0.0
2,750 to 2,999 grams	8.8	7.5	7.6	9.4	8.9	6.5	4.3	8.7	0.0
3,000 to 3,249 grams	14.9	13.5	13.0	15.2	14.6	10.8	10.9	16.3	0.0
3,250 to 3,499 grams	19.2	18.0	17.8	18.9	18.7	17.7	21.2	18.3	0.0
3,500 to 3,749 grams	18.8	18.0	19.2	18.8	18.7	18.3	19.6	20.1	0.0
3,750 to 3,999 grams	13.9	15.0	15.3	13.4	13.9	21.0	16.8	12.0	0.0
4,000 to 4,249 grams	8.0	9.1	9.2	7.6	8.7	10.2	9.2	7.9	0.0
4,250 to 4,499 grams	3.9	5.6	4.9	3.6	4.2	4.3	5.2	3.8	0.0
<b>4,500 grams or more</b>	<b>2.5</b>	<b>4.1</b>	<b>3.9</b>	<b>2.4</b>	<b>2.7</b>	<b>2.2</b>	<b>6.5</b>	<b>4.1</b>	<b>0.0</b>
4,500 to 4,749 grams	1.6	2.6	2.4	1.5	1.7	2.2	3.8	2.8	0.0
4,750 to 4,999 grams	0.6	1.0	1.0	0.5	0.6	0.0	2.2	0.8	0.0
5,000 to 5,249 grams	0.2	0.2	0.3	0.2	0.2	0.0	0.0	0.5	0.0
5,250 to 5,499 grams	0.1	0.2	0.1	0.1	0.1	0.0	0.3	0.0	0.0
5,500 grams or more	0.0	0.1	0.1	0.0	0.0	0.0	0.3	0.0	0.0
<b>Not stated</b>	<b>0.0</b>	<b>0.0</b>	<b>0.0</b>	<b>0.0</b>	<b>0.1</b>	<b>0.0</b>	<b>0.0</b>	<b>0.0</b>	<b>0.0</b>

**Note(s):** See "Data quality, concepts and methodology — Explanatory notes for the tables".

**Source(s):** Statistics Canada, Canadian Vital Statistics, Birth Database (CANSIM table 102-4509).

**Table 7-3**  
**Live births, by birth weight and geography — Females**

Birth weight	Place of residence of mother						
	Canada	Newfoundland and Labrador	Prince Edward Island	Nova Scotia	New Brunswick	Quebec	Ontario
	number						
<b>Total</b>	<b>179,527</b>	<b>2,230</b>	<b>716</b>	<b>4,306</b>	<b>3,443</b>	<b>41,143</b>	<b>67,625</b>
<b>Less than 500 grams</b>	<b>168</b>	<b>7</b>	<b>1</b>	<b>1</b>	<b>2</b>	<b>50</b>	<b>32</b>
<b>500 to 1,499 grams</b>	<b>1,601</b>	<b>23</b>	<b>5</b>	<b>38</b>	<b>28</b>	<b>328</b>	<b>617</b>
500 to 749 grams	304	4	0	8	5	69	106
750 to 999 grams	337	3	1	9	10	66	140
1,000 to 1,249 grams	408	4	2	9	5	79	158
1,250 to 1,499 grams	552	12	2	12	8	114	213
<b>1,500 to 2,499 grams</b>	<b>9,746</b>	<b>105</b>	<b>34</b>	<b>225</b>	<b>149</b>	<b>2,157</b>	<b>3,824</b>
1,500 to 1,749 grams	778	9	2	26	10	158	308
1,750 to 1,999 grams	1,355	7	8	31	14	310	540
2,000 to 2,249 grams	2,573	28	9	51	44	525	1,006
2,250 to 2,499 grams	5,040	61	15	117	81	1,164	1,970
<b>2,500 to 4,499 grams</b>	<b>165,697</b>	<b>2,036</b>	<b>661</b>	<b>3,977</b>	<b>3,207</b>	<b>38,199</b>	<b>62,352</b>
2,500 to 2,749 grams	10,637	103	24	226	190	2,471	4,199
2,750 to 2,999 grams	21,070	219	83	401	369	5,036	8,197
3,000 to 3,249 grams	32,909	325	100	766	573	8,112	12,345
3,250 to 3,499 grams	36,946	482	151	874	703	8,629	13,923
3,500 to 3,749 grams	31,054	393	147	788	605	7,041	11,538
3,750 to 3,999 grams	19,536	292	98	553	428	4,229	7,191
4,000 to 4,249 grams	9,560	159	42	248	234	1,940	3,527
4,250 to 4,499 grams	3,985	63	16	121	105	741	1,432
<b>4,500 grams or more</b>	<b>2,263</b>	<b>57</b>	<b>15</b>	<b>65</b>	<b>57</b>	<b>393</b>	<b>790</b>
4,500 to 4,749 grams	1,470	32	6	43	41	265	490
4,750 to 4,999 grams	532	17	4	13	10	86	210
5,000 to 5,249 grams	187	6	4	5	3	31	66
5,250 to 5,499 grams	45	1	0	2	1	9	15
5,500 grams or more	29	1	1	2	2	2	9
<b>Not stated</b>	<b>52</b>	<b>2</b>	<b>0</b>	<b>0</b>	<b>0</b>	<b>16</b>	<b>10</b>
	percent						
<b>Total</b>	<b>100.0</b>	<b>100.0</b>	<b>100.0</b>	<b>100.0</b>	<b>100.0</b>	<b>100.0</b>	<b>100.0</b>
<b>Less than 500 grams</b>	<b>0.1</b>	<b>0.3</b>	<b>0.1</b>	<b>0.0</b>	<b>0.1</b>	<b>0.1</b>	<b>0.0</b>
<b>500 to 1,499 grams</b>	<b>0.9</b>	<b>1.0</b>	<b>0.7</b>	<b>0.9</b>	<b>0.8</b>	<b>0.8</b>	<b>0.9</b>
500 to 749 grams	0.2	0.2	0.0	0.2	0.1	0.2	0.2
750 to 999 grams	0.2	0.1	0.1	0.2	0.3	0.2	0.2
1,000 to 1,249 grams	0.2	0.2	0.3	0.2	0.1	0.2	0.2
1,250 to 1,499 grams	0.3	0.5	0.3	0.3	0.2	0.3	0.3
<b>1,500 to 2,499 grams</b>	<b>5.4</b>	<b>4.7</b>	<b>4.7</b>	<b>5.2</b>	<b>4.3</b>	<b>5.2</b>	<b>5.7</b>
1,500 to 1,749 grams	0.4	0.4	0.3	0.6	0.3	0.4	0.5
1,750 to 1,999 grams	0.8	0.3	1.1	0.7	0.4	0.8	0.8
2,000 to 2,249 grams	1.4	1.3	1.3	1.2	1.3	1.3	1.5
2,250 to 2,499 grams	2.8	2.7	2.1	2.7	2.4	2.8	2.9
<b>2,500 to 4,499 grams</b>	<b>92.3</b>	<b>91.3</b>	<b>92.3</b>	<b>92.4</b>	<b>93.1</b>	<b>92.8</b>	<b>92.2</b>
2,500 to 2,749 grams	5.9	4.6	3.4	5.2	5.5	6.0	6.2
2,750 to 2,999 grams	11.7	9.8	11.6	9.3	10.7	12.2	12.1
3,000 to 3,249 grams	18.3	14.6	14.0	17.8	16.6	19.7	18.3
3,250 to 3,499 grams	20.6	21.6	21.1	20.3	20.4	21.0	20.6
3,500 to 3,749 grams	17.3	17.6	20.5	18.3	17.6	17.1	17.1
3,750 to 3,999 grams	10.9	13.1	13.7	12.8	12.4	10.3	10.6
4,000 to 4,249 grams	5.3	7.1	5.9	5.8	6.8	4.7	5.2
4,250 to 4,499 grams	2.2	2.8	2.2	2.8	3.0	1.8	2.1
<b>4,500 grams or more</b>	<b>1.3</b>	<b>2.6</b>	<b>2.1</b>	<b>1.5</b>	<b>1.7</b>	<b>1.0</b>	<b>1.2</b>
4,500 to 4,749 grams	0.8	1.4	0.8	1.0	1.2	0.6	0.7
4,750 to 4,999 grams	0.3	0.8	0.6	0.3	0.3	0.2	0.3
5,000 to 5,249 grams	0.1	0.3	0.6	0.1	0.1	0.1	0.1
5,250 to 5,499 grams	0.0	0.0	0.0	0.0	0.0	0.0	0.0
5,500 grams or more	0.0	0.0	0.1	0.0	0.1	0.0	0.0
<b>Not stated</b>	<b>0.0</b>	<b>0.1</b>	<b>0.0</b>	<b>0.0</b>	<b>0.0</b>	<b>0.0</b>	<b>0.0</b>

Table 7-3 – continued

## Live births, by birth weight and geography — Females

Birth weight	Place of residence of mother								
	Canada	Manitoba	Saskatchewan	Alberta	British Columbia	Yukon	Northwest Territories	Nunavut	Unknown
	number								
<b>Total</b>	<b>179,527</b>	<b>7,472</b>	<b>6,479</b>	<b>24,063</b>	<b>21,122</b>	<b>169</b>	<b>357</b>	<b>401</b>	<b>1</b>
<b>Less than 500 grams</b>	<b>168</b>	<b>8</b>	<b>5</b>	<b>39</b>	<b>23</b>	<b>0</b>	<b>0</b>	<b>0</b>	<b>0</b>
<b>500 to 1,499 grams</b>	<b>1,601</b>	<b>60</b>	<b>59</b>	<b>247</b>	<b>184</b>	<b>0</b>	<b>6</b>	<b>6</b>	<b>0</b>
500 to 749 grams	304	12	18	51	30	0	0	1	0
750 to 999 grams	337	14	7	46	39	0	0	2	0
1,000 to 1,249 grams	408	17	13	64	51	0	5	1	0
1,250 to 1,499 grams	552	17	21	86	64	0	1	2	0
<b>1,500 to 2,499 grams</b>	<b>9,746</b>	<b>378</b>	<b>313</b>	<b>1,443</b>	<b>1,077</b>	<b>9</b>	<b>10</b>	<b>22</b>	<b>0</b>
1,500 to 1,749 grams	778	27	28	117	93	0	0	0	0
1,750 to 1,999 grams	1,355	52	46	197	141	1	3	5	0
2,000 to 2,249 grams	2,573	91	89	423	294	3	2	8	0
2,250 to 2,499 grams	5,040	208	150	706	549	5	5	9	0
<b>2,500 to 4,499 grams</b>	<b>165,697</b>	<b>6,875</b>	<b>5,969</b>	<b>22,031</b>	<b>19,540</b>	<b>156</b>	<b>327</b>	<b>366</b>	<b>1</b>
2,500 to 2,749 grams	10,637	392	347	1,481	1,158	10	10	26	0
2,750 to 2,999 grams	21,070	714	637	2,938	2,380	18	26	51	1
3,000 to 3,249 grams	32,909	1,257	1,087	4,403	3,801	29	46	65	0
3,250 to 3,499 grams	36,946	1,486	1,254	4,942	4,303	33	77	89	0
3,500 to 3,749 grams	31,054	1,351	1,200	4,034	3,789	43	63	62	0
3,750 to 3,999 grams	19,536	950	792	2,526	2,364	13	55	45	0
4,000 to 4,249 grams	9,560	468	458	1,222	1,202	6	36	18	0
4,250 to 4,499 grams	3,985	257	194	485	543	4	14	10	0
<b>4,500 grams or more</b>	<b>2,263</b>	<b>150</b>	<b>133</b>	<b>302</b>	<b>277</b>	<b>4</b>	<b>14</b>	<b>6</b>	<b>0</b>
4,500 to 4,749 grams	1,470	93	92	213	182	1	8	4	0
4,750 to 4,999 grams	532	32	28	59	68	1	4	0	0
5,000 to 5,249 grams	187	16	8	23	21	1	1	2	0
5,250 to 5,499 grams	45	3	3	6	4	1	0	0	0
5,500 grams or more	29	6	2	1	2	0	1	0	0
<b>Not stated</b>	<b>52</b>	<b>1</b>	<b>0</b>	<b>1</b>	<b>21</b>	<b>0</b>	<b>0</b>	<b>1</b>	<b>0</b>
	percent								
<b>Total</b>	<b>100.0</b>	<b>100.0</b>	<b>100.0</b>	<b>100.0</b>	<b>100.0</b>	<b>100.0</b>	<b>100.0</b>	<b>100.0</b>	<b>100.0</b>
<b>Less than 500 grams</b>	<b>0.1</b>	<b>0.1</b>	<b>0.1</b>	<b>0.2</b>	<b>0.1</b>	<b>0.0</b>	<b>0.0</b>	<b>0.0</b>	<b>0.0</b>
<b>500 to 1,499 grams</b>	<b>0.9</b>	<b>0.8</b>	<b>0.9</b>	<b>1.0</b>	<b>0.9</b>	<b>0.0</b>	<b>1.7</b>	<b>1.5</b>	<b>0.0</b>
500 to 749 grams	0.2	0.2	0.3	0.2	0.1	0.0	0.0	0.2	0.0
750 to 999 grams	0.2	0.2	0.1	0.2	0.2	0.0	0.0	0.5	0.0
1,000 to 1,249 grams	0.2	0.2	0.2	0.3	0.2	0.0	1.4	0.2	0.0
1,250 to 1,499 grams	0.3	0.2	0.3	0.4	0.3	0.0	0.3	0.5	0.0
<b>1,500 to 2,499 grams</b>	<b>5.4</b>	<b>5.1</b>	<b>4.8</b>	<b>6.0</b>	<b>5.1</b>	<b>5.3</b>	<b>2.8</b>	<b>5.5</b>	<b>0.0</b>
1,500 to 1,749 grams	0.4	0.4	0.4	0.5	0.4	0.0	0.0	0.0	0.0
1,750 to 1,999 grams	0.8	0.7	0.7	0.8	0.7	0.6	0.8	1.2	0.0
2,000 to 2,249 grams	1.4	1.2	1.4	1.8	1.4	1.8	0.6	2.0	0.0
2,250 to 2,499 grams	2.8	2.8	2.3	2.9	2.6	3.0	1.4	2.2	0.0
<b>2,500 to 4,499 grams</b>	<b>92.3</b>	<b>92.0</b>	<b>92.1</b>	<b>91.6</b>	<b>92.5</b>	<b>92.3</b>	<b>91.6</b>	<b>91.3</b>	<b>100.0</b>
2,500 to 2,749 grams	5.9	5.2	5.4	6.2	5.5	5.9	2.8	6.5	0.0
2,750 to 2,999 grams	11.7	9.6	9.8	12.2	11.3	10.7	7.3	12.7	100.0
3,000 to 3,249 grams	18.3	16.8	16.8	18.3	18.0	17.2	12.9	16.2	0.0
3,250 to 3,499 grams	20.6	19.9	19.4	20.5	20.4	19.5	21.6	22.2	0.0
3,500 to 3,749 grams	17.3	18.1	18.5	16.8	17.9	25.4	17.6	15.5	0.0
3,750 to 3,999 grams	10.9	12.7	12.2	10.5	11.2	7.7	15.4	11.2	0.0
4,000 to 4,249 grams	5.3	6.3	7.1	5.1	5.7	3.6	10.1	4.5	0.0
4,250 to 4,499 grams	2.2	3.4	3.0	2.0	2.6	2.4	3.9	2.5	0.0
<b>4,500 grams or more</b>	<b>1.3</b>	<b>2.0</b>	<b>2.1</b>	<b>1.3</b>	<b>1.3</b>	<b>2.4</b>	<b>3.9</b>	<b>1.5</b>	<b>0.0</b>
4,500 to 4,749 grams	0.8	1.2	1.4	0.9	0.9	0.6	2.2	1.0	0.0
4,750 to 4,999 grams	0.3	0.4	0.4	0.2	0.3	0.6	1.1	0.0	0.0
5,000 to 5,249 grams	0.1	0.2	0.1	0.1	0.1	0.6	0.3	0.5	0.0
5,250 to 5,499 grams	0.0	0.0	0.0	0.0	0.0	0.6	0.0	0.0	0.0
5,500 grams or more	0.0	0.1	0.0	0.0	0.0	0.0	0.3	0.0	0.0
<b>Not stated</b>	<b>0.0</b>	<b>0.0</b>	<b>0.0</b>	<b>0.0</b>	<b>0.1</b>	<b>0.0</b>	<b>0.0</b>	<b>0.2</b>	<b>0.0</b>

**Note(s):** See "Data quality, concepts and methodology — Explanatory notes for the tables".

**Source(s):** Statistics Canada, Canadian Vital Statistics, Birth Database (CANSIM table 102-4509).

**Table 8-1**  
**Live births, by weeks of gestation and geography — Both sexes**

Weeks of gestation	Place of residence of mother						
	Canada	Newfoundland and Labrador	Prince Edward Island	Nova Scotia	New Brunswick	Quebec	Ontario
	number						
<b>Total</b>	<b>367,864</b>	<b>4,553</b>	<b>1,389</b>	<b>8,868</b>	<b>7,146</b>	<b>84,387</b>	<b>138,436</b>
<b>42 weeks or more</b>	<b>2,146</b>	<b>14</b>	<b>12</b>	<b>84</b>	<b>23</b>	<b>317</b>	<b>490</b>
<b>37 to 41 weeks</b>	<b>336,991</b>	<b>4,159</b>	<b>1,267</b>	<b>8,115</b>	<b>6,612</b>	<b>77,842</b>	<b>126,960</b>
37 to 39 weeks	186,978	2,149	705	4,170	3,463	44,781	71,735
40 to 41 weeks	150,013	2,010	562	3,945	3,149	33,061	55,225
<b>Less than 37 weeks</b>	<b>28,572</b>	<b>376</b>	<b>108</b>	<b>669</b>	<b>510</b>	<b>6,178</b>	<b>10,967</b>
28 to 36 weeks	26,951	350	104	637	481	5,800	10,407
28 to 31 weeks	2,427	32	15	64	47	477	926
32 to 33 weeks	3,423	45	19	97	60	660	1,345
34 to 36 weeks	21,101	273	70	476	374	4,663	8,136
20 to 27 weeks	1,572	22	4	30	29	359	557
20 to 23 weeks	477	10	1	11	10	110	140
24 to 27 weeks	1,095	12	3	19	19	249	417
Less than 20 weeks	49	4	0	2	0	19	3
<b>Not stated</b>	<b>155</b>	<b>4</b>	<b>2</b>	<b>0</b>	<b>1</b>	<b>50</b>	<b>19</b>
	percent						
<b>Total</b>	<b>100.0</b>	<b>100.0</b>	<b>100.0</b>	<b>100.0</b>	<b>100.0</b>	<b>100.0</b>	<b>100.0</b>
<b>42 weeks or more</b>	<b>0.6</b>	<b>0.3</b>	<b>0.9</b>	<b>0.9</b>	<b>0.3</b>	<b>0.4</b>	<b>0.4</b>
<b>37 to 41 weeks</b>	<b>91.6</b>	<b>91.3</b>	<b>91.2</b>	<b>91.5</b>	<b>92.5</b>	<b>92.2</b>	<b>91.7</b>
37 to 39 weeks	50.8	47.2	50.8	47.0	48.5	53.1	51.8
40 to 41 weeks	40.8	44.1	40.5	44.5	44.1	39.2	39.9
<b>Less than 37 weeks</b>	<b>7.8</b>	<b>8.3</b>	<b>7.8</b>	<b>7.5</b>	<b>7.1</b>	<b>7.3</b>	<b>7.9</b>
28 to 36 weeks	7.3	7.7	7.5	7.2	6.7	6.9	7.5
28 to 31 weeks	0.7	0.7	1.1	0.7	0.7	0.6	0.7
32 to 33 weeks	0.9	1.0	1.4	1.1	0.8	0.8	1.0
34 to 36 weeks	5.7	6.0	5.0	5.4	5.2	5.5	5.9
20 to 27 weeks	0.4	0.5	0.3	0.3	0.4	0.4	0.4
20 to 23 weeks	0.1	0.2	0.1	0.1	0.1	0.1	0.1
24 to 27 weeks	0.3	0.3	0.2	0.2	0.3	0.3	0.3
Less than 20 weeks	0.0	0.1	0.0	0.0	0.0	0.0	0.0
<b>Not stated</b>	<b>0.0</b>	<b>0.1</b>	<b>0.1</b>	<b>0.0</b>	<b>0.0</b>	<b>0.1</b>	<b>0.0</b>



Table 8-1 – continued

## Live births, by weeks of gestation and geography — Both sexes

Weeks of gestation	Place of residence of mother								
	Canada	Manitoba	Saskatchewan	Alberta	British Columbia	Yukon	Northwest Territories	Nunavut	Unknown
	number								
<b>Total</b>	<b>367,864</b>	<b>15,285</b>	<b>13,248</b>	<b>49,028</b>	<b>43,649</b>	<b>355</b>	<b>725</b>	<b>794</b>	<b>1</b>
<b>42 weeks or more</b>	<b>2,146</b>	<b>475</b>	<b>185</b>	<b>253</b>	<b>247</b>	<b>17</b>	<b>25</b>	<b>4</b>	<b>0</b>
<b>37 to 41 weeks</b>	<b>336,991</b>	<b>13,603</b>	<b>12,075</b>	<b>44,673</b>	<b>40,046</b>	<b>302</b>	<b>648</b>	<b>689</b>	<b>0</b>
37 to 39 weeks	186,978	6,612	6,020	24,850	21,539	174	307	473	0
40 to 41 weeks	150,013	6,991	6,055	19,823	18,507	128	341	216	0
<b>Less than 37 weeks</b>	<b>28,572</b>	<b>1,192</b>	<b>988</b>	<b>4,102</b>	<b>3,302</b>	<b>36</b>	<b>52</b>	<b>91</b>	<b>1</b>
28 to 36 weeks	26,951	1,117	936	3,843	3,104	34	51	86	1
28 to 31 weeks	2,427	101	77	364	303	2	9	10	0
32 to 33 weeks	3,423	126	126	526	398	5	7	9	0
34 to 36 weeks	21,101	890	733	2,953	2,403	27	35	67	1
20 to 27 weeks	1,572	71	51	246	195	2	1	5	0
20 to 23 weeks	477	29	16	96	52	2	0	0	0
24 to 27 weeks	1,095	42	35	150	143	0	1	5	0
Less than 20 weeks	49	4	1	13	3	0	0	0	0
<b>Not stated</b>	<b>155</b>	<b>15</b>	<b>0</b>	<b>0</b>	<b>54</b>	<b>0</b>	<b>0</b>	<b>10</b>	<b>0</b>
	percent								
<b>Total</b>	<b>100.0</b>	<b>100.0</b>	<b>100.0</b>	<b>100.0</b>	<b>100.0</b>	<b>100.0</b>	<b>100.0</b>	<b>100.0</b>	<b>100.0</b>
<b>42 weeks or more</b>	<b>0.6</b>	<b>3.1</b>	<b>1.4</b>	<b>0.5</b>	<b>0.6</b>	<b>4.8</b>	<b>3.4</b>	<b>0.5</b>	<b>0.0</b>
<b>37 to 41 weeks</b>	<b>91.6</b>	<b>89.0</b>	<b>91.1</b>	<b>91.1</b>	<b>91.7</b>	<b>85.1</b>	<b>89.4</b>	<b>86.8</b>	<b>0.0</b>
37 to 39 weeks	50.8	43.3	45.4	50.7	49.3	49.0	42.3	59.6	0.0
40 to 41 weeks	40.8	45.7	45.7	40.4	42.4	36.1	47.0	27.2	0.0
<b>Less than 37 weeks</b>	<b>7.8</b>	<b>7.8</b>	<b>7.5</b>	<b>8.4</b>	<b>7.6</b>	<b>10.1</b>	<b>7.2</b>	<b>11.5</b>	<b>100.0</b>
28 to 36 weeks	7.3	7.3	7.1	7.8	7.1	9.6	7.0	10.8	100.0
28 to 31 weeks	0.7	0.7	0.6	0.7	0.7	0.6	1.2	1.3	0.0
32 to 33 weeks	0.9	0.8	1.0	1.1	0.9	1.4	1.0	1.1	0.0
34 to 36 weeks	5.7	5.8	5.5	6.0	5.5	7.6	4.8	8.4	100.0
20 to 27 weeks	0.4	0.5	0.4	0.5	0.4	0.6	0.1	0.6	0.0
20 to 23 weeks	0.1	0.2	0.1	0.2	0.1	0.6	0.0	0.0	0.0
24 to 27 weeks	0.3	0.3	0.3	0.3	0.3	0.0	0.1	0.6	0.0
Less than 20 weeks	0.0	0.0	0.0	0.0	0.0	0.0	0.0	0.0	0.0
<b>Not stated</b>	<b>0.0</b>	<b>0.1</b>	<b>0.0</b>	<b>0.0</b>	<b>0.1</b>	<b>0.0</b>	<b>0.0</b>	<b>1.3</b>	<b>0.0</b>

Note(s): See "Data quality, concepts and methodology — Explanatory notes for the tables".

Source(s): Statistics Canada, Canadian Vital Statistics, Birth Database (CANSIM table 102-4512).

**Table 8-2**  
**Live births, by weeks of gestation and geography — Males**

Weeks of gestation	Place of residence of mother						
	Canada	Newfoundland and Labrador	Prince Edward Island	Nova Scotia	New Brunswick	Quebec	Ontario
	number						
<b>Total</b>	<b>188,337</b>	<b>2,323</b>	<b>673</b>	<b>4,562</b>	<b>3,703</b>	<b>43,244</b>	<b>70,811</b>
<b>42 weeks or more</b>	<b>1,156</b>	<b>7</b>	<b>3</b>	<b>43</b>	<b>10</b>	<b>188</b>	<b>253</b>
<b>37 to 41 weeks</b>	<b>171,770</b>	<b>2,125</b>	<b>604</b>	<b>4,164</b>	<b>3,419</b>	<b>39,701</b>	<b>64,616</b>
37 to 39 weeks	95,958	1,055	325	2,151	1,834	22,908	36,843
40 to 41 weeks	75,812	1,070	279	2,013	1,585	16,793	27,773
<b>Less than 37 weeks</b>	<b>15,328</b>	<b>189</b>	<b>64</b>	<b>355</b>	<b>273</b>	<b>3,328</b>	<b>5,937</b>
28 to 36 weeks	14,460	178	61	340	255	3,128	5,630
28 to 31 weeks	1,321	17	10	37	28	275	499
32 to 33 weeks	1,857	25	7	50	35	363	709
34 to 36 weeks	11,282	136	44	253	192	2,490	4,422
20 to 27 weeks	844	11	3	13	18	193	305
20 to 23 weeks	258	6	0	6	8	52	88
24 to 27 weeks	586	5	3	7	10	141	217
Less than 20 weeks	24	0	0	2	0	7	2
<b>Not stated</b>	<b>83</b>	<b>2</b>	<b>2</b>	<b>0</b>	<b>1</b>	<b>27</b>	<b>5</b>
	percent						
<b>Total</b>	<b>100.0</b>	<b>100.0</b>	<b>100.0</b>	<b>100.0</b>	<b>100.0</b>	<b>100.0</b>	<b>100.0</b>
<b>42 weeks or more</b>	<b>0.6</b>	<b>0.3</b>	<b>0.4</b>	<b>0.9</b>	<b>0.3</b>	<b>0.4</b>	<b>0.4</b>
<b>37 to 41 weeks</b>	<b>91.2</b>	<b>91.5</b>	<b>89.7</b>	<b>91.3</b>	<b>92.3</b>	<b>91.8</b>	<b>91.3</b>
37 to 39 weeks	51.0	45.4	48.3	47.2	49.5	53.0	52.0
40 to 41 weeks	40.3	46.1	41.5	44.1	42.8	38.8	39.2
<b>Less than 37 weeks</b>	<b>8.1</b>	<b>8.1</b>	<b>9.5</b>	<b>7.8</b>	<b>7.4</b>	<b>7.7</b>	<b>8.4</b>
28 to 36 weeks	7.7	7.7	9.1	7.5	6.9	7.2	8.0
28 to 31 weeks	0.7	0.7	1.5	0.8	0.8	0.6	0.7
32 to 33 weeks	1.0	1.1	1.0	1.1	0.9	0.8	1.0
34 to 36 weeks	6.0	5.9	6.5	5.5	5.2	5.8	6.2
20 to 27 weeks	0.4	0.5	0.4	0.3	0.5	0.4	0.4
20 to 23 weeks	0.1	0.3	0.0	0.1	0.2	0.1	0.1
24 to 27 weeks	0.3	0.2	0.4	0.2	0.3	0.3	0.3
Less than 20 weeks	0.0	0.0	0.0	0.0	0.0	0.0	0.0
<b>Not stated</b>	<b>0.0</b>	<b>0.1</b>	<b>0.3</b>	<b>0.0</b>	<b>0.0</b>	<b>0.1</b>	<b>0.0</b>

Table 8-2 – continued

## Live births, by weeks of gestation and geography — Males

Weeks of gestation	Place of residence of mother								
	Canada	Manitoba	Saskatchewan	Alberta	British Columbia	Yukon	Northwest Territories	Nunavut	Unknown
	number								
<b>Total</b>	<b>188,337</b>	<b>7,813</b>	<b>6,769</b>	<b>24,965</b>	<b>22,527</b>	<b>186</b>	<b>368</b>	<b>393</b>	<b>0</b>
<b>42 weeks or more</b>	<b>1,156</b>	<b>254</b>	<b>101</b>	<b>142</b>	<b>132</b>	<b>7</b>	<b>15</b>	<b>1</b>	<b>0</b>
<b>37 to 41 weeks</b>	<b>171,770</b>	<b>6,908</b>	<b>6,175</b>	<b>22,669</b>	<b>20,561</b>	<b>159</b>	<b>327</b>	<b>342</b>	<b>0</b>
37 to 39 weeks	95,958	3,351	3,123	12,675	11,196	91	157	249	0
40 to 41 weeks	75,812	3,557	3,052	9,994	9,365	68	170	93	0
<b>Less than 37 weeks</b>	<b>15,328</b>	<b>644</b>	<b>493</b>	<b>2,154</b>	<b>1,800</b>	<b>20</b>	<b>26</b>	<b>45</b>	<b>0</b>
28 to 36 weeks	14,460	599	476	2,015	1,694	18	25	41	0
28 to 31 weeks	1,321	56	38	194	162	2	2	1	0
32 to 33 weeks	1,857	70	70	280	234	3	4	7	0
34 to 36 weeks	11,282	473	368	1,541	1,298	13	19	33	0
20 to 27 weeks	844	41	17	130	106	2	1	4	0
20 to 23 weeks	258	18	2	50	26	2	0	0	0
24 to 27 weeks	586	23	15	80	80	0	1	4	0
Less than 20 weeks	24	4	0	9	0	0	0	0	0
<b>Not stated</b>	<b>83</b>	<b>7</b>	<b>0</b>	<b>0</b>	<b>34</b>	<b>0</b>	<b>0</b>	<b>5</b>	<b>0</b>
	percent								
<b>Total</b>	<b>100.0</b>	<b>100.0</b>	<b>100.0</b>	<b>100.0</b>	<b>100.0</b>	<b>100.0</b>	<b>100.0</b>	<b>100.0</b>	<b>0.0</b>
<b>42 weeks or more</b>	<b>0.6</b>	<b>3.3</b>	<b>1.5</b>	<b>0.6</b>	<b>0.6</b>	<b>3.8</b>	<b>4.1</b>	<b>0.3</b>	<b>0.0</b>
<b>37 to 41 weeks</b>	<b>91.2</b>	<b>88.4</b>	<b>91.2</b>	<b>90.8</b>	<b>91.3</b>	<b>85.5</b>	<b>88.9</b>	<b>87.0</b>	<b>0.0</b>
37 to 39 weeks	51.0	42.9	46.1	50.8	49.7	48.9	42.7	63.4	0.0
40 to 41 weeks	40.3	45.5	45.1	40.0	41.6	36.6	46.2	23.7	0.0
<b>Less than 37 weeks</b>	<b>8.1</b>	<b>8.2</b>	<b>7.3</b>	<b>8.6</b>	<b>8.0</b>	<b>10.8</b>	<b>7.1</b>	<b>11.5</b>	<b>0.0</b>
28 to 36 weeks	7.7	7.7	7.0	8.1	7.5	9.7	6.8	10.4	0.0
28 to 31 weeks	0.7	0.7	0.6	0.8	0.7	1.1	0.5	0.3	0.0
32 to 33 weeks	1.0	0.9	1.0	1.1	1.0	1.6	1.1	1.8	0.0
34 to 36 weeks	6.0	6.1	5.4	6.2	5.8	7.0	5.2	8.4	0.0
20 to 27 weeks	0.4	0.5	0.3	0.5	0.5	1.1	0.3	1.0	0.0
20 to 23 weeks	0.1	0.2	0.0	0.2	0.1	1.1	0.0	0.0	0.0
24 to 27 weeks	0.3	0.3	0.2	0.3	0.4	0.0	0.3	1.0	0.0
Less than 20 weeks	0.0	0.1	0.0	0.0	0.0	0.0	0.0	0.0	0.0
<b>Not stated</b>	<b>0.0</b>	<b>0.1</b>	<b>0.0</b>	<b>0.0</b>	<b>0.2</b>	<b>0.0</b>	<b>0.0</b>	<b>1.3</b>	<b>0.0</b>

Note(s): See "Data quality, concepts and methodology — Explanatory notes for the tables".

Source(s): Statistics Canada, Canadian Vital Statistics, Birth Database (CANSIM table 102-4512).

**Table 8-3**  
**Live births, by weeks of gestation and geography — Females**

Weeks of gestation	Place of residence of mother						
	Canada	Newfoundland and Labrador	Prince Edward Island	Nova Scotia	New Brunswick	Quebec	Ontario
	number						
<b>Total</b>	<b>179,527</b>	<b>2,230</b>	<b>716</b>	<b>4,306</b>	<b>3,443</b>	<b>41,143</b>	<b>67,625</b>
<b>42 weeks or more</b>	<b>990</b>	<b>7</b>	<b>9</b>	<b>41</b>	<b>13</b>	<b>129</b>	<b>237</b>
<b>37 to 41 weeks</b>	<b>165,221</b>	<b>2,034</b>	<b>663</b>	<b>3,951</b>	<b>3,193</b>	<b>38,141</b>	<b>62,344</b>
37 to 39 weeks	91,020	1,094	380	2,019	1,629	21,873	34,892
40 to 41 weeks	74,201	940	283	1,932	1,564	16,268	27,452
<b>Less than 37 weeks</b>	<b>13,244</b>	<b>187</b>	<b>44</b>	<b>314</b>	<b>237</b>	<b>2,850</b>	<b>5,030</b>
28 to 36 weeks	12,491	172	43	297	226	2,672	4,777
28 to 31 weeks	1,106	15	5	27	19	202	427
32 to 33 weeks	1,566	20	12	47	25	297	636
34 to 36 weeks	9,819	137	26	223	182	2,173	3,714
20 to 27 weeks	728	11	1	17	11	166	252
20 to 23 weeks	219	4	1	5	2	58	52
24 to 27 weeks	509	7	0	12	9	108	200
Less than 20 weeks	25	4	0	0	0	12	1
<b>Not stated</b>	<b>72</b>	<b>2</b>	<b>0</b>	<b>0</b>	<b>0</b>	<b>23</b>	<b>14</b>
	percent						
<b>Total</b>	<b>100.0</b>	<b>100.0</b>	<b>100.0</b>	<b>100.0</b>	<b>100.0</b>	<b>100.0</b>	<b>100.0</b>
<b>42 weeks or more</b>	<b>0.6</b>	<b>0.3</b>	<b>1.3</b>	<b>1.0</b>	<b>0.4</b>	<b>0.3</b>	<b>0.4</b>
<b>37 to 41 weeks</b>	<b>92.0</b>	<b>91.2</b>	<b>92.6</b>	<b>91.8</b>	<b>92.7</b>	<b>92.7</b>	<b>92.2</b>
37 to 39 weeks	50.7	49.1	53.1	46.9	47.3	53.2	51.6
40 to 41 weeks	41.3	42.2	39.5	44.9	45.4	39.5	40.6
<b>Less than 37 weeks</b>	<b>7.4</b>	<b>8.4</b>	<b>6.1</b>	<b>7.3</b>	<b>6.9</b>	<b>6.9</b>	<b>7.4</b>
28 to 36 weeks	7.0	7.7	6.0	6.9	6.6	6.5	7.1
28 to 31 weeks	0.6	0.7	0.7	0.6	0.6	0.5	0.6
32 to 33 weeks	0.9	0.9	1.7	1.1	0.7	0.7	0.9
34 to 36 weeks	5.5	6.1	3.6	5.2	5.3	5.3	5.5
20 to 27 weeks	0.4	0.5	0.1	0.4	0.3	0.4	0.4
20 to 23 weeks	0.1	0.2	0.1	0.1	0.1	0.1	0.1
24 to 27 weeks	0.3	0.3	0.0	0.3	0.3	0.3	0.3
Less than 20 weeks	0.0	0.2	0.0	0.0	0.0	0.0	0.0
<b>Not stated</b>	<b>0.0</b>	<b>0.1</b>	<b>0.0</b>	<b>0.0</b>	<b>0.0</b>	<b>0.1</b>	<b>0.0</b>

Table 8-3 – continued

## Live births, by weeks of gestation and geography — Females

Weeks of gestation	Place of residence of mother								
	Canada	Manitoba	Saskatchewan	Alberta	British Columbia	Yukon	Northwest Territories	Nunavut	Unknown
	number								
<b>Total</b>	<b>179,527</b>	<b>7,472</b>	<b>6,479</b>	<b>24,063</b>	<b>21,122</b>	<b>169</b>	<b>357</b>	<b>401</b>	<b>1</b>
<b>42 weeks or more</b>	<b>990</b>	<b>221</b>	<b>84</b>	<b>111</b>	<b>115</b>	<b>10</b>	<b>10</b>	<b>3</b>	<b>0</b>
<b>37 to 41 weeks</b>	<b>165,221</b>	<b>6,695</b>	<b>5,900</b>	<b>22,004</b>	<b>19,485</b>	<b>143</b>	<b>321</b>	<b>347</b>	<b>0</b>
37 to 39 weeks	91,020	3,261	2,897	12,175	10,343	83	150	224	0
40 to 41 weeks	74,201	3,434	3,003	9,829	9,142	60	171	123	0
<b>Less than 37 weeks</b>	<b>13,244</b>	<b>548</b>	<b>495</b>	<b>1,948</b>	<b>1,502</b>	<b>16</b>	<b>26</b>	<b>46</b>	<b>1</b>
28 to 36 weeks	12,491	518	460	1,828	1,410	16	26	45	1
28 to 31 weeks	1,106	45	39	170	141	0	7	9	0
32 to 33 weeks	1,566	56	56	246	164	2	3	2	0
34 to 36 weeks	9,819	417	365	1,412	1,105	14	16	34	1
20 to 27 weeks	728	30	34	116	89	0	0	1	0
20 to 23 weeks	219	11	14	46	26	0	0	0	0
24 to 27 weeks	509	19	20	70	63	0	0	1	0
Less than 20 weeks	25	0	1	4	3	0	0	0	0
<b>Not stated</b>	<b>72</b>	<b>8</b>	<b>0</b>	<b>0</b>	<b>20</b>	<b>0</b>	<b>0</b>	<b>5</b>	<b>0</b>
	percent								
<b>Total</b>	<b>100.0</b>	<b>100.0</b>	<b>100.0</b>	<b>100.0</b>	<b>100.0</b>	<b>100.0</b>	<b>100.0</b>	<b>100.0</b>	<b>100.0</b>
<b>42 weeks or more</b>	<b>0.6</b>	<b>3.0</b>	<b>1.3</b>	<b>0.5</b>	<b>0.5</b>	<b>5.9</b>	<b>2.8</b>	<b>0.7</b>	<b>0.0</b>
<b>37 to 41 weeks</b>	<b>92.0</b>	<b>89.6</b>	<b>91.1</b>	<b>91.4</b>	<b>92.2</b>	<b>84.6</b>	<b>89.9</b>	<b>86.5</b>	<b>0.0</b>
37 to 39 weeks	50.7	43.6	44.7	50.6	49.0	49.1	42.0	55.9	0.0
40 to 41 weeks	41.3	46.0	46.3	40.8	43.3	35.5	47.9	30.7	0.0
<b>Less than 37 weeks</b>	<b>7.4</b>	<b>7.3</b>	<b>7.6</b>	<b>8.1</b>	<b>7.1</b>	<b>9.5</b>	<b>7.3</b>	<b>11.5</b>	<b>100.0</b>
28 to 36 weeks	7.0	6.9	7.1	7.6	6.7	9.5	7.3	11.2	100.0
28 to 31 weeks	0.6	0.6	0.6	0.7	0.7	0.0	2.0	2.2	0.0
32 to 33 weeks	0.9	0.7	0.9	1.0	0.8	1.2	0.8	0.5	0.0
34 to 36 weeks	5.5	5.6	5.6	5.9	5.2	8.3	4.5	8.5	100.0
20 to 27 weeks	0.4	0.4	0.5	0.5	0.4	0.0	0.0	0.2	0.0
20 to 23 weeks	0.1	0.1	0.2	0.2	0.1	0.0	0.0	0.0	0.0
24 to 27 weeks	0.3	0.3	0.3	0.3	0.3	0.0	0.0	0.2	0.0
Less than 20 weeks	0.0	0.0	0.0	0.0	0.0	0.0	0.0	0.0	0.0
<b>Not stated</b>	<b>0.0</b>	<b>0.1</b>	<b>0.0</b>	<b>0.0</b>	<b>0.1</b>	<b>0.0</b>	<b>0.0</b>	<b>1.2</b>	<b>0.0</b>

Note(s): See "Data quality, concepts and methodology — Explanatory notes for the tables".

Source(s): Statistics Canada, Canadian Vital Statistics, Birth Database (CANSIM table 102-4512).

**Table 9-1**  
**Live births, by characteristics of the mother and child, Canada — Birth weight indicators**

Characteristics of mother and child	Live <sup>1</sup> births	Birth weight			
		Less than 1,500 grams	Less than 2,500 grams	2,500 to 4,499 grams	4,500 grams or more
	number	percent			
<b>Age of mother, all ages<sup>2</sup></b>	<b>367,864</b>	<b>1.0</b>	<b>6.0</b>	<b>92.1</b>	<b>1.9</b>
Under 20 years	15,280	1.2	6.3	91.6	2.0
20 to 34 years	286,194	0.9	5.7	92.4	1.8
35 to 49 years	66,340	1.3	7.1	90.9	2.0
Not stated <sup>3</sup>	50	10.0	22.0	78.0	0.0
<b>Total, parity of mother</b>	<b>367,864</b>	<b>1.0</b>	<b>6.0</b>	<b>92.1</b>	<b>1.9</b>
First live birth	163,446	1.1	6.3	92.2	1.5
Second live birth	129,886	0.9	5.4	92.7	1.9
Third live birth or more	74,495	1.0	6.5	90.8	2.6
Not stated	37	0.0	5.4	64.9	0.0
<b>Total, marital status of mother<sup>4</sup></b>	<b>367,864</b>	<b>1.0</b>	<b>6.0</b>	<b>92.1</b>	<b>1.9</b>
Married and/or separated	227,944	0.9	5.6	92.5	1.9
Not married	100,347	1.1	6.3	91.8	1.8
Not stated	39,573	1.4	7.3	90.6	2.1
<b>Total, birthplace of mother</b>	<b>367,864</b>	<b>1.0</b>	<b>6.0</b>	<b>92.1</b>	<b>1.9</b>
Canada	268,158	0.9	5.8	92.1	2.1
Outside Canada	94,622	1.1	6.6	92.2	1.2
Not stated	5,084	1.8	7.3	91.3	1.4
<b>Both sexes</b>	<b>367,864</b>	<b>1.0</b>	<b>6.0</b>	<b>92.1</b>	<b>1.9</b>
Males	188,337	1.0	5.6	91.9	2.5
Females	179,527	1.0	6.4	92.3	1.3
<b>Total</b>	<b>367,864</b>	<b>1.0</b>	<b>6.0</b>	<b>92.1</b>	<b>1.9</b>
Single	356,305	0.7	4.5	93.5	1.9
Multiple	11,559	8.8	51.9	48.1	0.0
<b>Total, weeks of gestation</b>	<b>367,864</b>	<b>1.0</b>	<b>6.0</b>	<b>92.1</b>	<b>1.9</b>
Less than 28 weeks	1,621	99.2	99.6	0.2	0.0
28 to 36 weeks	26,951	7.4	52.2	47.6	0.2
37 to 41 weeks	336,991	0.0	1.9	96.1	2.0
42 weeks or more	2,146	0.0	0.3	91.9	7.8
Not stated	155	0.0	3.2	56.1	1.3

1. Number of live births includes births with unknown birth weight.

2. Age of mother attained at the last birthday preceding delivery.

3. For confidentiality reasons, live births to mothers aged 50 and over are included in the category "Age of mother, not stated." Where information is unavailable on the birth mother of children who are adopted, these records are included in the category "Age of mother, not stated."

4. Partway through 2003, Alberta Registries amended their Registration of Birth form in such a way that Statistics Canada can no longer determine the legal marital status of those persons in common-law marriages.

**Note(s):** See "Data quality, concepts and methodology — Explanatory notes for the tables".

**Source(s):** Statistics Canada, Canadian Vital Statistics, Birth Database (CANSIM table 102-4511).

**Table 9-2**  
**Live births, by characteristics of the mother and child, Canada — Weeks of gestation indicators**

Characteristics of mother and child	Live births	Gestation		
		Less than 37 weeks	37 to 41 weeks	42 weeks or more
	number	percent		
<b>Age of mother, all ages <sup>1</sup></b>	<b>367,864</b>	<b>7.8</b>	<b>91.6</b>	<b>0.6</b>
Under 20 years	15,280	8.0	90.9	1.0
20 to 34 years	286,194	7.4	92.0	0.6
35 to 49 years	66,340	9.2	90.2	0.5
Not stated <sup>2</sup>	50	20.0	78.0	2.0
<b>Total, parity of mother</b>	<b>367,864</b>	<b>7.8</b>	<b>91.6</b>	<b>0.6</b>
First live birth	163,446	7.7	91.5	0.8
Second live birth	129,886	7.1	92.5	0.4
Third live birth or more	74,495	9.0	90.4	0.5
Not stated	37	5.4	59.5	0.0
<b>Total, marital status of mother <sup>3</sup></b>	<b>367,864</b>	<b>7.8</b>	<b>91.6</b>	<b>0.6</b>
Married and/or separated	227,944	7.4	92.0	0.5
Not married	100,347	8.1	91.2	0.7
Not stated	39,573	9.1	90.3	0.6
<b>Total, birthplace of mother</b>	<b>367,864</b>	<b>7.8</b>	<b>91.6</b>	<b>0.6</b>
Canada	268,158	7.9	91.5	0.6
Outside Canada	94,622	7.4	92.1	0.4
Not stated	5,084	9.3	90.2	0.4
<b>Both sexes</b>	<b>367,864</b>	<b>7.8</b>	<b>91.6</b>	<b>0.6</b>
Males	188,337	8.1	91.2	0.6
Females	179,527	7.4	92.0	0.6
<b>Total</b>	<b>367,864</b>	<b>7.8</b>	<b>91.6</b>	<b>0.6</b>
Single	356,305	6.2	93.1	0.6
Multiple	11,559	55.2	44.8	0.0
<b>Total, birth weight</b>	<b>367,864</b>	<b>7.8</b>	<b>91.6</b>	<b>0.6</b>
Less than 500 grams	336	98.8	1.2	0.0
500 to 1,499 grams	3,284	99.4	0.6	0.0
1,500 to 2,499 grams	18,481	65.4	34.5	0.0
2,500 to 4,499 grams	338,763	3.8	95.6	0.6
4,500 grams or more	6,887	0.7	96.8	2.4
Not stated	113	10.6	35.4	0.0

1. Age of mother attained at the last birthday preceding delivery.

2. For confidentiality reasons, live births to mothers aged 50 and over are included in the category "Age of mother, not stated." Where information is unavailable on the birth mother of children who are adopted, these records are included in the category "Age of mother, not stated."

3. Partway through 2003, Alberta Registries amended their Registration of Birth form in such a way that Statistics Canada can no longer determine the legal marital status of those persons in common-law marriages.

**Note(s):** See "Data quality, concepts and methodology — Explanatory notes for the tables".

**Source(s):** Statistics Canada, Canadian Vital Statistics, Birth Database (CANSIM table 102-4513).

**Table 10**  
**Live births, by place of residence of mother and place of occurrence,<sup>1</sup> Canada, provinces, territories and outside Canada**

Place of residence of mother	Place of occurrence								
	Total, Canada and USA	United States	Canada	Newfoundland and Labrador	Prince Edward Island	Nova Scotia	New Brunswick	Quebec	Ontario
	number								
<b>Total, Canada and other</b>	<b>368,085</b>	<b>58</b>	<b>368,027</b>	<b>4,574</b>	<b>1,367</b>	<b>8,937</b>	<b>7,229</b>	<b>83,135</b>	<b>139,519</b>
Canada	367,864	58	367,806	4,570	1,367	8,929	7,223	83,109	139,415
Newfoundland and Labrador	4,553	0	4,553	4,542	0	2	3	4	1
Prince Edward Island	1,389	0	1,389	0	1,356	27	6	0	0
Nova Scotia	8,868	0	8,868	1	3	8,813	35	3	6
New Brunswick	7,146	0	7,146	1	4	60	7,067	7	5
Quebec	84,387	6	84,381	10	2	1	101	83,050	1,209
Ontario	138,436	48	138,388	3	1	12	5	39	138,118
Manitoba	15,285	0	15,285	1	0	4	1	0	8
Saskatchewan	13,248	0	13,248	0	0	0	0	0	4
Alberta	49,028	3	49,025	8	1	4	4	6	29
British Columbia	43,649	1	43,648	0	0	3	0	0	19
Yukon	355	0	355	0	0	0	0	0	0
Northwest Territories	725	0	725	3	0	0	0	0	1
Nunavut	794	0	794	1	0	3	1	0	15
Unknown province or territory	1	0	1	0	0	0	0	0	0
Outside Canada	221	...	221	4	0	8	6	26	104

Place of residence of mother	Place of occurrence								
	Total, Canada and USA	Canada	Manitoba	Saskatchewan	Alberta	British Columbia	Yukon	Northwest Territories	Nunavut
	number								
<b>Total, Canada and other</b>	<b>368,085</b>	<b>368,027</b>	<b>15,695</b>	<b>13,448</b>	<b>48,841</b>	<b>43,682</b>	<b>358</b>	<b>763</b>	<b>479</b>
Canada	367,864	367,806	15,690	13,448	48,828	43,629	356	763	479
Newfoundland and Labrador	4,553	4,553	0	0	1	0	0	0	0
Prince Edward Island	1,389	1,389	0	0	0	0	0	0	0
Nova Scotia	8,868	8,868	0	0	5	2	0	0	0
New Brunswick	7,146	7,146	0	1	0	1	0	0	0
Quebec	84,387	84,381	1	0	0	3	2	0	2
Ontario	138,436	138,388	178	5	10	17	0	0	0
Manitoba	15,285	15,285	15,145	114	9	3	0	0	0
Saskatchewan	13,248	13,248	161	12,831	244	8	0	0	0
Alberta	49,028	49,025	10	484	48,385	91	1	2	0
British Columbia	43,649	43,648	4	7	109	43,493	11	2	0
Yukon	355	355	0	1	4	8	342	0	0
Northwest Territories	725	725	3	3	49	2	0	664	0
Nunavut	794	794	188	2	12	1	0	94	477
Unknown province or territory	1	1	0	0	0	0	0	1	0
Outside Canada	221	221	5	0	13	53	2	0	0

1. The geographic distribution of live births in this table is based on the mother's usual place of residence and on the place of occurrence.

**Note(s):** See "Data quality, concepts and methodology — Explanatory notes for the tables".

**Source(s):** Statistics Canada, Canadian Vital Statistics, Birth Database (CANSIM table 102-4501).



**Table 11**  
**Fetal deaths (20 weeks or more of gestation) and late fetal deaths (28 weeks or more of gestation), Canada, provinces and territories**

Place of residence of mother	Gestation	
	20 weeks or more (fetal deaths)	28 weeks or more (late fetal deaths)
	number	
<b>Canada</b>	<b>2,637</b>	<b>1,172</b>
Newfoundland and Labrador	35	15
Prince Edward Island	11	5
Nova Scotia	94	27
New Brunswick	46	24
Quebec	359	212
Ontario	1,144	487
Manitoba	122	60
Saskatchewan	97	54
Alberta	360	139
British Columbia	355	138
Yukon	1	1
Northwest Territories	7	5
Nunavut	6	5
Unknown	0	0

**Note(s):** See "Data quality, concepts and methodology — Explanatory notes for the tables".

**Source(s):** Statistics Canada, Canadian Vital Statistics, Stillbirth Database (CANSIM table 102-4514).

**Table 12-1**  
**Live births and fetal deaths (stillbirths), by geography — Type of birth (single or multiple)**

Place of residence of mother	Type of birth								
	Total			Single			Multiple		
	Total, births	Live births	Fetal deaths (stillbirths)	Total, births	Live births	Fetal deaths (stillbirths)	Total, births	Live births	Fetal deaths (stillbirths)
	number								
<b>Canada</b>	<b>370,501</b>	<b>367,864</b>	<b>2,637</b>	<b>358,744</b>	<b>356,305</b>	<b>2,439</b>	<b>11,757</b>	<b>11,559</b>	<b>198</b>
Newfoundland and Labrador	4,588	4,553	35	4,454	4,421	33	134	132	2
Prince Edward Island	1,400	1,389	11	1,347	1,336	11	53	53	0
Nova Scotia	8,962	8,868	94	8,670	8,582	88	292	286	6
New Brunswick	7,192	7,146	46	6,995	6,954	41	197	192	5
Quebec	84,746	84,387	359	82,311	81,968	343	2,435	2,419	16
Ontario	139,580	138,436	1,144	134,872	133,825	1,047	4,708	4,611	97
Manitoba	15,407	15,285	122	14,969	14,854	115	438	431	7
Saskatchewan	13,345	13,248	97	12,937	12,850	87	408	398	10
Alberta	49,388	49,028	360	47,768	47,429	339	1,620	1,599	21
British Columbia	44,004	43,649	355	42,568	42,245	323	1,436	1,404	32
Yukon	356	355	1	340	339	1	16	16	0
Northwest Territories	732	725	7	722	717	5	10	8	2
Nunavut	800	794	6	790	784	6	10	10	0
Unknown	1	1	0	1	1	0	0	0	0

**Note(s):** See "Data quality, concepts and methodology — Explanatory notes for the tables".

**Source(s):** Statistics Canada, Canadian Vital Statistics, Birth and Stillbirth Databases (CANSIM table 102-4515).

**Table 12-2**  
**Live births and fetal deaths (stillbirths), by geography — Place of birth (hospital and non-hospital)**

Place of residence of mother	Live births and fetal deaths (stillbirths)					
	Total, births		Live births		Fetal deaths (stillbirths)	
	number	percent	number	percent	number	percent
<b>Canada</b>						
Total, place of birth	370,501	100.0	367,864	100.0	2,637	100.0
Hospital	366,106	98.8	363,521	98.8	2,585	98.0
Non-hospital	4,334	1.2	4,294	1.2	40	1.5
Unknown	61	0.0	49	0.0	12	0.5
<b>Newfoundland and Labrador</b>						
Total, place of birth	4,588	100.0	4,553	100.0	35	100.0
Hospital	4,582	99.9	4,548	99.9	34	97.1
Non-hospital	5	0.1	4	0.1	1	2.9
Unknown	1	0.0	1	0.0	0	0.0
<b>Prince Edward Island</b>						
Total, place of birth	1,400	100.0	1,389	100.0	11	100.0
Hospital	1,398	99.9	1,387	99.9	11	100.0
Non-hospital	0	0.0	0	0.0	0	0.0
Unknown	2	0.1	2	0.1	0	0.0
<b>Nova Scotia</b>						
Total, place of birth	8,962	100.0	8,868	100.0	94	100.0
Hospital	8,928	99.6	8,834	99.6	94	100.0
Non-hospital	34	0.4	34	0.4	0	0.0
Unknown	0	0.0	0	0.0	0	0.0
<b>New Brunswick</b>						
Total, place of birth	7,192	100.0	7,146	100.0	46	100.0
Hospital	7,177	99.8	7,131	99.8	46	100.0
Non-hospital	14	0.2	14	0.2	0	0.0
Unknown	1	0.0	1	0.0	0	0.0
<b>Quebec</b>						
Total, place of birth	84,746	100.0	84,387	100.0	359	100.0
Hospital	84,391	99.6	84,073	99.6	318	88.6
Non-hospital	345	0.4	314	0.4	31	8.6
Unknown	10	0.0	0	0.0	10	2.8
<b>Ontario</b>						
Total, place of birth	139,580	100.0	138,436	100.0	1,144	100.0
Hospital	137,233	98.3	136,090	98.3	1,143	99.9
Non-hospital	2,346	1.7	2,345	1.7	1	0.1
Unknown	1	0.0	1	0.0	0	0.0
<b>Manitoba</b>						
Total, place of birth	15,407	100.0	15,285	100.0	122	100.0
Hospital	15,209	98.7	15,089	98.7	120	98.4
Non-hospital	172	1.1	171	1.1	1	0.8
Unknown	26	0.2	25	0.2	1	0.8
<b>Saskatchewan</b>						
Total, place of birth	13,345	100.0	13,248	100.0	97	100.0
Hospital	13,287	99.6	13,190	99.6	97	100.0
Non-hospital	57	0.4	57	0.4	0	0.0
Unknown	1	0.0	1	0.0	0	0.0
<b>Alberta</b>						
Total, place of birth	49,388	100.0	49,028	100.0	360	100.0
Hospital	48,901	99.0	48,543	99.0	358	99.4
Non-hospital	484	1.0	483	1.0	1	0.3
Unknown	3	0.0	2	0.0	1	0.3
<b>British Columbia</b>						
Total, place of birth	44,004	100.0	43,649	100.0	355	100.0
Hospital	43,217	98.2	42,867	98.2	350	98.6
Non-hospital	782	1.8	777	1.8	5	1.4
Unknown	5	0.0	5	0.0	0	0.0
<b>Yukon</b>						
Total, place of birth	356	100.0	355	100.0	1	100.0
Hospital	349	98.0	348	98.0	1	100.0
Non-hospital	6	1.7	6	1.7	0	0.0
Unknown	1	0.3	1	0.3	0	0.0

Table 12-2 – continued

## Live births and fetal deaths (stillbirths), by geography — Place of birth (hospital and non-hospital)

Place of residence of mother	Live births and fetal deaths (stillbirths)					
	Total, births		Live births		Fetal deaths (stillbirths)	
	number	percent	number	percent	number	percent
<b>Northwest Territories</b>						
Total, place of birth	732	100.0	725	100.0	7	100.0
Hospital	707	96.6	700	96.6	7	100.0
Non-hospital	20	2.7	20	2.8	0	0.0
Unknown	5	0.7	5	0.7	0	0.0
<b>Nunavut</b>						
Total, place of birth	800	100.0	794	100.0	6	100.0
Hospital	726	90.8	720	90.7	6	100.0
Non-hospital	69	8.6	69	8.7	0	0.0
Unknown	5	0.6	5	0.6	0	0.0
<b>Unknown</b>						
Total, place of birth	1	100.0	1	100.0	0	0.0
Hospital	1	100.0	1	100.0	0	0.0
Non-hospital	0	0.0	0	0.0	0	0.0
Unknown	0	0.0	0	0.0	0	0.0

**Note(s):** See "Data quality, concepts and methodology — Explanatory notes for the tables".

**Source(s):** Statistics Canada, Canadian Vital Statistics, Birth and Stillbirth Databases (CANSIM table 102-4516).

## Definitions

---

The definitions used for the production of statistical tables of Canadian vital statistics data are based on those recommended by the World Health Organization<sup>1</sup> and the United Nations.<sup>2</sup>

**Age of mother.** Age the mother attained at her last birthday preceding delivery.

**Birth.** The complete expulsion or extraction from its mother of a product of conception, irrespective of the duration of the pregnancy. See also “Fetal death (stillbirth)” and “Live birth”.

### Birth and fertility rates

- **Age-specific fertility rate (ASFR):** The number of live births per 1,000 women in a specific age group. Five-year age groups were used in these tabulations (ranging from 15 to 19 to 45 to 49 years).
- **Age-specific fertility rate, women 15 to 19 years:** Live births to women under age 20 per 1,000 women aged 15 to 19.
- **Crude birth rate:** The number of live births per 1,000 population.
- **Total fertility rate (TFR):** An estimate of the average number of live births a woman can be expected to have in her lifetime, based on the age-specific fertility rates (ASFR) of a given year. The total fertility rate (TFR) = SUM of single year of age-specific fertility rate.

**Birth weight.** The first weight of the fetus or newborn obtained immediately after birth, expressed in grams.

- **Extremely low birth weight:** Birth weight under 1,000 grams.
- **Very low birth weight:** Birth weight under 1,500 grams.
- **Low birth weight:** Birth weight under 2,500 grams.
- **Normal birth weight:** Ranges from 2,500 to 4,499 grams.
- **High birth weight:** Birth weight of 4,500 or more grams.

**Delivery.** A delivery may consist of one or more live born or stillborn fetuses. The number of deliveries in a given period will be equal to or less than the number of births because multiple births (twins, triplets or higher-order births) are counted as single deliveries.

**Fetal death (stillbirth).** See Stillbirth definition.

**Fetal death (stillbirth) rate.** See Stillbirth rate definition.

**Live birth.** The complete expulsion or extraction from its mother of a product of conception, irrespective of the duration of the pregnancy, which, after such separation, breathes or shows any other evidence of life, such as beating of the heart, pulsation of the umbilical cord, or definite movement of voluntary muscles, whether or not the umbilical cord has been cut or the placenta is attached.

---

1. World Health Organization (WHO). *International Statistical Classification of Diseases and Related Health Problems, Tenth Revision, Volumes 1 and 2 (ICD-10)*. Geneva, 1992.

2. United Nations. *Principles and Recommendations for a Vital Statistics System*. Statistical Papers, Series M, No. 19, Rev. 1. New York, 1974.

**Marital status of mother.** Refers to the legal conjugal status of the mother at the time of the delivery. Persons in common-law relationships are assigned to their legal marital status category. A **single** person is one who has never been married, or a person whose marriage has been annulled and who has not remarried. A **separated** person is legally married but is not living with his or her spouse because the couple no longer wants to live together. A **divorced** person is one who has obtained a legal divorce and has not remarried. A **married** person is one who is legally married and not separated. A person whose spouse has died and who has not remarried is **widowed**.

**Mean age of mother.** The mean (average) age of mother for Canada, a province or a territory is calculated by summing the mothers' ages at their last birthday preceding delivery, and then dividing the sum by the total number of live births in that jurisdiction. To estimate mid-year mean age, a statistic often used in analyses, add 0.5 to mean age.

**Mean birth weight.** The mean (average) birth weight for Canada, a province or a territory is calculated by summing the first weight of each live newborn (obtained immediately after birth), and then dividing the sum by the total number of live births in that jurisdiction.

**Median birth weight.** The median is the middle value in a set of ordered numbers (for example, newborns' birth weight ranked from lightest to heaviest). In the case of an even number of observations, the median is the average of the two middle values.

**Multiple birth.** A delivery that results in more than one birth, whether live born or stillborn. This includes the delivery of twins, triplets, quadruplets, quintuplets and more.

**Parity of mother.** The number of live births a woman has had to date (excludes fetal deaths or stillbirths). A woman with zero parity has had no live births; a woman of parity 1 has had one live birth, of parity 2, two live births, and so on. In the case of a first delivery resulting in live twins, the woman has a parity of 1 after the first twin is born and a parity of 2 after the second twin is born.

**Population.** Persons whose usual place of residence is somewhere in Canada, including Canadian government employees stationed abroad and their families, members of the Canadian Armed Forces stationed abroad and their families, crews of Canadian merchant vessels, and non-permanent residents of Canada.

Mid-year (July 1) population estimates are used to calculate the rates in vital statistics publications (see Appendix I).

**Provinces and territories.** Unless otherwise stated, the geographic distribution of births and fetal deaths (stillbirths) in the tables of this publication is based on the mother's usual place of residence.

Nunavut came into being officially as a Territory of Canada on April 1, 1999. The name Northwest Territories applies to a Territory with different geographic boundaries before and after April 1, 1999.

**Stillbirth (fetal death).** Death prior to the complete expulsion or extraction from its mother of a product of conception, irrespective of the duration of pregnancy; the death is indicated by the fact that after such separation the fetus does not breathe or show any other evidence of life, such as beating of the heart, pulsation of the umbilical cord, or definite movement of voluntary muscles. Only fetal deaths where the product of conception has a birth weight of 500 grams or more or the duration of pregnancy is 20 weeks or longer are registered in Canada.

In Quebec (as well as in Saskatchewan prior to 2001 and in New Brunswick prior to November 1996), only fetal deaths (stillbirths) weighing 500 or more grams must be reported, regardless of the gestation period.

Because of these differences in reporting requirements, fetal death (stillbirth) data are presented for two gestation periods: 20 or more weeks of gestation (including fetal deaths or stillbirths with unknown weeks of gestation), and 28 or more weeks of gestation (excluding unknown weeks of gestation).

**Stillbirth (fetal death) rate.** The number of fetal deaths (stillbirths) per 1,000 live births plus fetal deaths (stillbirths).

**Type of birth.** Type of birth refers to the plurality of a delivery, that is, whether the delivery results in the birth of one or more live born or stillborn infants.

**Weeks of gestation.** The interval, in completed weeks, between the first day of the mother's last menstrual period and the day of delivery (that is, the duration of pregnancy). It can also be any estimate of that interval, based on ultrasound, a physical examination or other method. Canadian birth registration documents do not specify how the gestational age was calculated. **Pre-term** refers to a period of gestation less than 37 completed weeks; **term**, 37 through 41 completed weeks; and **post-term**, 42 or more completed weeks.

## Explanatory notes for the tables

---

### Table 1 Live births, by sex and geography

- Live birth is the complete expulsion or extraction from its mother of a product of conception, irrespective of the duration of the pregnancy, which, after such separation, breathes or shows any other evidence of life, such as beating of the heart, pulsation of the umbilical cord, or definite movement of voluntary muscles, whether or not the umbilical cord has been cut or the placenta is attached.
- The geographic distribution of live births in this table is based on the mother's usual place of residence.
- Unknown province or territory of residence of mother, refers to live births to mothers who are residents of Canada, with unknown province or territory of residence.

### Table 2 Live births, by geography

- Live birth is the complete expulsion or extraction from its mother of a product of conception, irrespective of the duration of the pregnancy, which, after such separation, breathes or shows any other evidence of life, such as beating of the heart, pulsation of the umbilical cord, or definite movement of voluntary muscles, whether or not the umbilical cord has been cut or the placenta is attached.
- The geographic distribution of live births in this table is based on the mother's usual place of residence.
- Unknown province or territory of residence of mother, refers to live births to mothers who are residents of Canada, with unknown province or territory of residence.
- Marital status of mother refers to her legal conjugal status at the time of the birth. Persons in common-law relationships are assigned to their legal marital status category. A single person is one who has never been married, or a person whose marriage has been annulled and who has not remarried. A separated person is legally married but is not living with his or her spouse because the couple no longer wants to live together. A divorced person is one who has obtained a legal divorce and has not remarried. A married person is one who is legally married and not separated. A person whose spouse has died and who has not remarried is widowed.

### Table 3 Mean age of mother, by geography

- Live birth is the complete expulsion or extraction from its mother of a product of conception, irrespective of the duration of the pregnancy, which, after such separation, breathes or shows any other evidence of life, such as beating of the heart, pulsation of the umbilical cord, or definite movement of voluntary muscles, whether or not the umbilical cord has been cut or the placenta is attached.
- The geographic distribution of live births in this table is based on the mother's usual place of residence.
- Unknown province or territory of residence of mother, refers to live births to mothers who are residents of Canada, with unknown province or territory of residence.

### Table 4 Crude birth rate, age specific and total fertility rates, by geography

- Live birth is the complete expulsion or extraction from its mother of a product of conception, irrespective of the duration of the pregnancy, which, after such separation, breathes or shows any other evidence of life, such as beating of the heart, pulsation of the umbilical cord, or definite movement of voluntary muscles, whether or not the umbilical cord has been cut or the placenta is attached.

- The geographic distribution of live births in this table is based on the mother's usual place of residence.
- Rates for Canada include live births to mothers who are residents of Canada, with unknown province or territory of residence.

**Table 5 Mean and median birth weight, by geography**

- Live birth is the complete expulsion or extraction from its mother of a product of conception, irrespective of the duration of the pregnancy, which, after such separation, breathes or shows any other evidence of life, such as beating of the heart, pulsation of the umbilical cord, or definite movement of voluntary muscles, whether or not the umbilical cord has been cut or the placenta is attached.
- The geographic distribution of live births in this table is based on the mother's usual place of residence.
- Unknown province or territory of residence of mother, refers to live births to mothers who are residents of Canada, with unknown province or territory of residence.
- Birth weight is the first weight of the newborn obtained immediately after birth, expressed in grams.

**Table 6 Live births, Canada**

- Live birth is the complete expulsion or extraction from its mother of a product of conception, irrespective of the duration of the pregnancy, which, after such separation, breathes or shows any other evidence of life, such as beating of the heart, pulsation of the umbilical cord, or definite movement of voluntary muscles, whether or not the umbilical cord has been cut or the placenta is attached.
- Marital status of mother refers to her legal conjugal status at the time of the birth. Persons in common-law relationships are assigned to their legal marital status category. A single person is one who has never been married, or a person whose marriage has been annulled and who has not remarried. A separated person is legally married but is not living with his or her spouse because the couple no longer wants to live together. A divorced person is one who has obtained a legal divorce and has not remarried. A married person is one who is legally married and not separated. A person whose spouse has died and who has not remarried is widowed.
- The geographic distribution of live births in this table is based on the mother's usual place of residence.
- Parity refers to the number of live births a female has had to date (excludes fetal deaths or stillbirths). A female with zero parity has had no live births; a female of parity 1 has had one live birth, of parity 2, two live births and so on. In the case of a first delivery resulting in live twins, the female has a parity of 1 after the first twin is born and a parity of 2 after the second twin is born.

**Table 7 Live births, by birth weight and geography**

- Live birth is the complete expulsion or extraction from its mother of a product of conception, irrespective of the duration of the pregnancy, which, after such separation, breathes or shows any other evidence of life, such as beating of the heart, pulsation of the umbilical cord, or definite movement of voluntary muscles, whether or not the umbilical cord has been cut or the placenta is attached.
- Birth weight is the first weight of the newborn obtained immediately after birth, expressed in grams.
- The geographic distribution of live births in this table is based on the mother's usual place of residence.
- Unknown province or territory of residence of mother, refers to live births to mothers who are residents of Canada, with unknown province or territory of residence.



**Table 8 Live births, by weeks of gestation and geography**

- Live birth is the complete expulsion or extraction from its mother of a product of conception, irrespective of the duration of the pregnancy, which, after such separation, breathes or shows any other evidence of life, such as beating of the heart, pulsation of the umbilical cord, or definite movement of voluntary muscles, whether or not the umbilical cord has been cut or the placenta is attached.
- Weeks of gestation refers to the interval, in completed weeks, between the first day of the mother's last menstrual period and the day of delivery (that is, the duration of the pregnancy). It can also be any estimate of that interval, based on ultrasound, a physical examination or other method. Canadian birth registration documents do not specify how the weeks of gestation are to be calculated.
- The geographic distribution of live births in this table is based on the mother's usual place of residence.
- Unknown province or territory of residence of mother, refers to live births to mothers who are residents of Canada, with unknown province or territory of residence.

**Table 9 Live births, by characteristics of the mother and child, Canada**

- Live birth is the complete expulsion or extraction from its mother of a product of conception, irrespective of the duration of the pregnancy, which, after such separation, breathes or shows any other evidence of life, such as beating of the heart, pulsation of the umbilical cord, or definite movement of voluntary muscles, whether or not the umbilical cord has been cut or the placenta is attached.
- The geographic distribution of live births in this table is based on the mother's usual place of residence.
- Birth weight is the first weight of the newborn obtained immediately after birth, expressed in grams.
- Parity refers to the number of live births a female has had to date (excludes fetal deaths or stillbirths). A female with zero parity has had no live births; a female of parity 1 has had one live birth, of parity 2, two live births and so on. In the case of a first delivery resulting in live twins, the female has a parity of 1 after the first twin is born and a parity of 2 after the second twin is born.
- Marital status of mother refers to her legal conjugal status at the time of the birth. Persons in common-law relationships are assigned to their legal marital status category. A single person is one who has never been married, or a person whose marriage has been annulled and who has not remarried. A separated person is legally married but is not living with his or her spouse because the couple no longer wants to live together. A divorced person is one who has obtained a legal divorce and has not remarried. A married person is one who is legally married and not separated. A person whose spouse has died and who has not remarried is widowed.
- Type of birth refers to the plurality of a delivery, that is, whether the delivery results in the birth of one or more liveborn or stillborn infants. The delivery must result in the birth of at least one liveborn infant to be included in this table. The category "Type of birth, multiple" includes the delivery of twins, triplets, quadruplets, quintuplets or more.
- Weeks of gestation refers to the interval, in completed weeks, between the first day of the mother's last menstrual period and the day of delivery (that is, the duration of the pregnancy). It can also be any estimate of that interval, based on ultrasound, a physical examination or other method. Canadian birth registration documents do not specify how the weeks of gestation are to be calculated.

**Table 10 Live births, by place of residence of mother and place of occurrence, Canada, provinces, territories and outside Canada**

- Live birth is the complete expulsion or extraction from its mother of a product of conception, irrespective of the duration of the pregnancy, which, after such separation, breathes or shows any other evidence of life, such as beating of the heart, pulsation of the umbilical cord, or definite movement of voluntary muscles, whether or not the umbilical cord has been cut or the placenta is attached.
- Unknown province or territory of residence of mother, refers to live births to mothers who are residents of Canada, with unknown province or territory of residence.
- Place of residence of mother outside Canada includes live births to mothers who are non-residents of Canada and births with unknown country of residence of mother.

**Table 11 Fetal deaths (20 weeks or more of gestation) and late fetal deaths (28 weeks or more of gestation), Canada, provinces and territories**

- Fetal death (stillbirth) is death prior to the complete expulsion or extraction from its mother of a product of conception, irrespective of the duration of pregnancy; the death is indicated by the fact that after such separation the fetus does not breathe or show any other evidence of life, such as beating of the heart, pulsation of the umbilical cord, or definite movement of voluntary muscles. Only fetal deaths where the product of conception has a birth weight of 500 grams or more or the duration of pregnancy is 20 weeks or longer are registered in Canada.
- Weeks of gestation refers to the interval, in completed weeks, between the first day of the mother's last menstrual period and the day of delivery (that is, the duration of the pregnancy). It can also be any estimate of that interval, based on ultrasound, a physical examination or other method. Canadian birth registration documents do not specify how the weeks of gestation are to be calculated.
- Weeks of gestation, 20 weeks or more (fetal deaths) refers to a fetal death (stillbirth) with a duration of pregnancy of 20 weeks or more, or a birth weight of 500 grams or more. Fetal deaths with unknown weeks of gestation are included.
- Weeks of gestation, 28 weeks or more (late fetal deaths) refers to a fetal death (stillbirth) with a duration of pregnancy of 28 weeks or more. Fetal deaths with unknown weeks of gestation are excluded.
- Fetal death (stillbirth) data are tabulated according to the mother's usual place of residence.
- Unknown province or territory of residence of mother, refers to fetal deaths (stillbirths) to mothers who are residents of Canada, with unknown province or territory of residence.

**Table 12-1 Live births and fetal deaths (stillbirths), by geography – Type of birth (single or multiple)**

- Live birth is the complete expulsion or extraction from its mother of a product of conception, irrespective of the duration of the pregnancy, which, after such separation, breathes or shows any other evidence of life, such as beating of the heart, pulsation of the umbilical cord, or definite movement of voluntary muscles, whether or not the umbilical cord has been cut or the placenta is attached.
- Fetal death (stillbirth) is death prior to the complete expulsion or extraction from its mother of a product of conception, irrespective of the duration of pregnancy; the death is indicated by the fact that after such separation the fetus does not breathe or show any other evidence of life, such as beating of the heart, pulsation of the umbilical cord, or definite movement of voluntary muscles. Only fetal deaths where the product of conception has a birth weight of 500 grams or more or the duration of pregnancy is 20 weeks or longer are registered in Canada.
- Type of birth refers to the plurality of a delivery, that is, whether the delivery results in one or more liveborn or stillborn infants. The category "Type of birth, multiples" includes the delivery of twins, triplets, quadruplets, quintuplets or more.

- 
- The geographic distribution of live births and fetal deaths (stillbirths) in this table is based on the mother's usual place of residence.
  - Unknown province or territory of residence of mother, refers to live births or fetal deaths (stillbirths) to mothers who are residents of Canada, with unknown province or territory of residence.

**Table 12-2 Live births and fetal deaths (stillbirths), by geography – Place of birth (hospital and non-hospital)**

- Live birth is the complete expulsion or extraction from its mother of a product of conception, irrespective of the duration of the pregnancy, which, after such separation, breathes or shows any other evidence of life, such as beating of the heart, pulsation of the umbilical cord, or definite movement of voluntary muscles, whether or not the umbilical cord has been cut or the placenta is attached.
- Fetal death (stillbirth) is death prior to the complete expulsion or extraction from its mother of a product of conception, irrespective of the duration of pregnancy; the death is indicated by the fact that after such separation the fetus does not breathe or show any other evidence of life, such as beating of the heart, pulsation of the umbilical cord, or definite movement of voluntary muscles. Only fetal deaths where the product of conception has a birth weight of 500 grams or more or the duration of pregnancy is 20 weeks or longer are registered in Canada.
- The category "Place of birth , non-hospital" includes births in private homes, in health care institutions such as nursing homes and other long-term care facilities, nursing stations and other short-term care facilities and other health care facilities not licensed to operate as hospitals by provincial, territorial or federal governments, such as free-standing birthing centres and at other specified sites.
- The geographic distribution of live births and fetal deaths (stillbirths) in this table is based on the mother's usual place of residence.
- Unknown province or territory of residence of mother, refers to live births or fetal deaths (stillbirths) to mothers who are residents of Canada, with unknown province or territory of residence.

# Appendix I

## Postcensal Population Estimates

Text table 1

Postcensal population estimates by sex and age group, Canada, provinces and territories, July 1, 2007<sup>1</sup>

	Canada	N.L.	P.E.I.	N.S.	N.B.	Que.	Ont.
	number						
<b>Both sexes</b>							
All ages	<b>32,927,372</b>	<b>506,459</b>	<b>138,118</b>	<b>936,039</b>	<b>745,370</b>	<b>7,686,038</b>	<b>12,793,572</b>
under 1 year <sup>2</sup>	367,864	4,553	1,389	8,868	7,146	84,387	138,436
1 to 4 years <sup>2</sup>	1,391,188	18,223	5,369	33,933	27,811	302,204	557,750
5 to 9 years	1,800,890	25,283	7,629	47,235	38,264	388,686	721,973
10 to 14 years	2,055,944	28,468	9,056	55,005	43,769	462,327	816,540
15 to 19 years	2,237,853	33,503	10,144	63,233	48,827	491,787	880,387
20 to 24 years	2,269,707	31,560	9,125	61,317	47,223	489,640	887,069
25 to 29 years	2,230,880	28,556	7,904	55,140	45,236	531,877	845,378
30 to 34 years	2,187,285	30,744	7,992	56,530	46,790	501,170	863,063
35 to 39 years	2,312,126	36,176	8,849	62,740	50,328	508,077	935,828
40 to 44 years	2,648,910	41,630	10,664	74,881	59,047	613,088	1,065,054
45 to 49 years	2,706,717	42,624	11,022	79,059	61,608	647,661	1,045,880
50 to 54 years	2,457,009	42,521	10,451	73,944	59,994	600,932	917,229
55 to 59 years	2,109,726	39,377	9,856	67,168	54,722	522,622	786,212
60 to 64 years	1,714,904	32,136	8,123	56,187	43,967	444,999	636,965
65 to 69 years	1,284,787	22,673	6,004	41,740	32,858	329,094	484,469
70 to 74 years	1,049,081	17,648	5,047	33,182	25,539	261,406	403,156
75 to 79 years	892,457	13,461	3,811	26,868	21,177	222,585	344,676
80 to 84 years	654,379	9,359	2,895	19,625	16,043	157,070	256,222
85 to 89 years	369,519	5,561	1,783	12,650	9,892	84,122	139,568
90 years and over	186,146	2,403	1,005	6,734	5,129	42,304	67,717
<b>Males</b>							
All ages	<b>16,326,141</b>	<b>248,819</b>	<b>67,580</b>	<b>454,536</b>	<b>365,912</b>	<b>3,805,440</b>	<b>6,314,875</b>
under 1 year <sup>2</sup>	188,337	2,323	673	4,562	3,703	43,244	70,811
1 to 4 years <sup>2</sup>	716,180	9,407	2,791	17,113	14,277	154,732	287,212
5 to 9 years	924,780	12,953	3,905	24,162	19,721	199,457	370,257
10 to 14 years	1,052,294	14,704	4,674	27,896	22,550	236,745	417,089
15 to 19 years	1,148,538	17,212	5,154	31,988	25,101	251,606	450,422
20 to 24 years	1,163,895	15,859	4,579	30,510	24,115	250,655	452,805
25 to 29 years	1,123,269	14,164	3,792	26,068	22,685	271,448	419,039
30 to 34 years	1,098,671	14,826	3,948	27,474	22,875	257,142	426,184
35 to 39 years	1,167,642	17,584	4,402	30,873	25,012	260,085	469,188
40 to 44 years	1,336,898	20,298	5,316	37,031	29,330	312,695	536,230
45 to 49 years	1,357,045	20,926	5,367	38,811	30,097	324,807	525,946
50 to 54 years	1,219,521	20,912	5,031	36,188	29,437	297,550	453,454
55 to 59 years	1,042,489	19,593	4,874	33,173	27,058	256,721	386,108
60 to 64 years	843,144	15,920	4,051	27,655	21,857	216,607	311,613
65 to 69 years	620,270	11,223	2,972	20,214	16,126	158,632	231,256
70 to 74 years	491,364	8,566	2,387	15,626	11,927	120,717	186,910
75 to 79 years	397,575	6,057	1,731	11,786	9,212	95,846	153,130
80 to 84 years	259,268	3,865	1,122	7,593	6,253	59,985	101,168
85 to 89 years	125,799	1,855	575	4,107	3,244	26,947	47,750
90 years and over	49,162	572	236	1,706	1,332	9,819	18,303

See notes at the end of the table.

Text table 1 – continued

Postcensal population estimates by sex and age group, Canada, provinces and territories, July 1, 2007<sup>1</sup>

	Canada	N.L.	P.E.I.	N.S.	N.B.	Que.	Ont.
	number						
<b>Females</b>							
<b>All ages</b>	<b>16,601,231</b>	<b>257,640</b>	<b>70,538</b>	<b>481,503</b>	<b>379,458</b>	<b>3,880,598</b>	<b>6,478,697</b>
under 1 year <sup>2</sup>	179,527	2,230	716	4,306	3,443	41,143	67,625
1 to 4 years <sup>2</sup>	675,008	8,816	2,578	16,820	13,534	147,472	270,538
5 to 9 years	876,110	12,330	3,724	23,073	18,543	189,229	351,716
10 to 14 years	1,003,650	13,764	4,382	27,109	21,219	225,582	399,451
15 to 19 years	1,089,315	16,291	4,990	31,245	23,726	240,181	429,965
20 to 24 years	1,105,812	15,701	4,546	30,807	23,108	238,985	434,264
25 to 29 years	1,107,611	14,392	4,112	29,072	22,551	260,429	426,339
30 to 34 years	1,088,614	15,918	4,044	29,056	23,915	244,028	436,879
35 to 39 years	1,144,484	18,592	4,447	31,867	25,316	247,992	466,640
40 to 44 years	1,312,012	21,332	5,348	37,850	29,717	300,393	528,824
45 to 49 years	1,349,672	21,698	5,655	40,248	31,511	322,854	519,934
50 to 54 years	1,237,488	21,609	5,420	37,756	30,557	303,382	463,775
55 to 59 years	1,067,237	19,784	4,982	33,995	27,664	265,901	400,104
60 to 64 years	871,760	16,216	4,072	28,532	22,110	228,392	325,352
65 to 69 years	664,517	11,450	3,032	21,526	16,732	170,462	253,213
70 to 74 years	557,717	9,082	2,660	17,556	13,612	140,689	216,246
75 to 79 years	494,882	7,404	2,080	15,082	11,965	126,739	191,546
80 to 84 years	395,111	5,494	1,773	12,032	9,790	97,085	155,054
85 to 89 years	243,720	3,706	1,208	8,543	6,648	57,175	91,818
90 years and over	136,984	1,831	769	5,028	3,797	32,485	49,414

See notes at the end of the table.

Text table 1 – continued

Postcensal population estimates by sex and age group, Canada, provinces and territories, July 1, 2007<sup>1</sup>

	Canada	Man.	Sask.	Alta.	B.C.	Y.T.	N.W.T.	Nvt.
	number							
<b>Both sexes</b>								
<b>All ages</b>	<b>32,927,372</b>	<b>1,193,514</b>	<b>999,697</b>	<b>3,510,892</b>	<b>4,310,305</b>	<b>32,582</b>	<b>43,535</b>	<b>31,251</b>
under 1 year <sup>2</sup>	367,864	15,285	13,248	49,028	43,649	355	725	794
1 to 4 years <sup>2</sup>	1,391,188	55,897	47,187	168,909	167,059	1,463	2,615	2,769
5 to 9 years	1,800,890	74,186	61,352	207,996	219,981	1,886	3,061	3,358
10 to 14 years	2,055,944	82,779	68,447	225,140	255,561	2,082	3,463	3,307
15 to 19 years	2,237,853	88,176	77,009	249,075	286,298	2,390	3,746	3,278
20 to 24 years	2,269,707	84,343	72,976	282,237	295,795	2,216	3,425	2,781
25 to 29 years	2,230,880	78,262	65,816	279,259	284,879	2,048	3,836	2,689
30 to 34 years	2,187,285	75,538	59,342	262,879	275,320	2,218	3,358	2,341
35 to 39 years	2,312,126	77,342	58,433	259,652	306,397	2,443	3,507	2,354
40 to 44 years	2,648,910	87,672	70,090	276,381	341,948	2,808	3,586	2,061
45 to 49 years	2,706,717	93,245	76,489	286,530	354,094	3,297	3,581	1,627
50 to 54 years	2,457,009	85,483	72,887	254,226	332,087	2,955	2,959	1,341
55 to 59 years	2,109,726	73,125	59,532	197,143	294,298	2,395	2,245	1,031
60 to 64 years	1,714,904	58,505	46,953	147,831	235,540	1,646	1,369	683
65 to 69 years	1,284,787	43,538	37,771	107,156	177,411	931	763	379
70 to 74 years	1,049,081	36,175	33,280	87,233	145,054	613	526	222
75 to 79 years	892,457	32,603	30,424	73,321	122,577	441	377	136
80 to 84 years	654,379	26,200	24,080	51,426	90,959	215	224	61
85 to 89 years	369,519	16,163	15,282	30,142	54,099	115	119	23
90 years and over	186,146	8,997	9,099	15,328	27,299	65	50	16
<b>Males</b>								
<b>All ages</b>	<b>16,326,141</b>	<b>593,801</b>	<b>495,170</b>	<b>1,788,459</b>	<b>2,136,186</b>	<b>16,633</b>	<b>22,636</b>	<b>16,094</b>
under 1 year <sup>2</sup>	188,337	7,813	6,769	24,965	22,527	186	368	393
1 to 4 years <sup>2</sup>	716,180	28,904	24,300	87,585	86,297	768	1,372	1,422
5 to 9 years	924,780	38,352	31,416	107,019	113,361	959	1,497	1,721
10 to 14 years	1,052,294	42,274	34,994	115,227	131,668	1,035	1,782	1,656
15 to 19 years	1,148,538	44,923	39,718	128,747	148,729	1,305	1,923	1,710
20 to 24 years	1,163,895	43,482	37,160	148,793	151,573	1,134	1,831	1,399
25 to 29 years	1,123,269	39,946	33,115	147,030	141,716	1,035	1,885	1,346
30 to 34 years	1,098,671	38,455	29,725	137,622	136,422	1,025	1,753	1,220
35 to 39 years	1,167,642	39,195	29,307	135,391	152,387	1,181	1,848	1,189
40 to 44 years	1,336,898	44,187	35,030	142,018	170,478	1,369	1,844	1,072
45 to 49 years	1,357,045	47,755	38,176	146,163	174,576	1,679	1,886	856
50 to 54 years	1,219,521	43,038	36,545	130,274	163,296	1,542	1,525	729
55 to 59 years	1,042,489	36,331	29,985	100,059	145,476	1,265	1,281	565
60 to 64 years	843,144	29,006	23,408	74,088	116,863	909	806	361
65 to 69 years	620,270	20,906	18,285	52,494	87,023	536	400	203
70 to 74 years	491,364	16,794	15,687	41,532	70,504	309	276	129
75 to 79 years	397,575	14,327	13,760	33,632	57,603	227	192	72
80 to 84 years	259,268	10,218	9,937	21,011	37,889	99	96	32
85 to 89 years	125,799	5,478	5,307	10,644	19,782	45	51	14
90 years and over	49,162	2,417	2,546	4,165	8,016	25	20	5

See notes at the end of the table.

Text table 1 – continued

Postcensal population estimates by sex and age group, Canada, provinces and territories, July 1, 2007<sup>1</sup>

	Canada	Man.	Sask.	Alta.	B.C.	Y.T.	N.W.T.	Nvt.
	number							
<b>Females</b>								
<b>All ages</b>	<b>16,601,231</b>	<b>599,713</b>	<b>504,527</b>	<b>1,722,433</b>	<b>2,174,119</b>	<b>15,949</b>	<b>20,899</b>	<b>15,157</b>
under 1 year <sup>2</sup>	179,527	7,472	6,479	24,063	21,122	169	357	401
1 to 4 years <sup>2</sup>	675,008	26,993	22,887	81,324	80,762	695	1,243	1,347
5 to 9 years	876,110	35,834	29,936	100,977	106,620	927	1,564	1,637
10 to 14 years	1,003,650	40,505	33,453	109,913	123,893	1,047	1,681	1,651
15 to 19 years	1,089,315	43,253	37,291	120,328	137,569	1,085	1,823	1,568
20 to 24 years	1,105,812	40,861	35,816	133,444	144,222	1,082	1,594	1,382
25 to 29 years	1,107,611	38,316	32,701	132,229	143,163	1,013	1,951	1,343
30 to 34 years	1,088,614	37,083	29,617	125,257	138,898	1,193	1,605	1,121
35 to 39 years	1,144,484	38,147	29,126	124,261	154,010	1,262	1,659	1,165
40 to 44 years	1,312,012	43,485	35,060	134,363	171,470	1,439	1,742	989
45 to 49 years	1,349,672	45,490	38,313	140,367	179,518	1,618	1,695	771
50 to 54 years	1,237,488	42,445	36,342	123,952	168,791	1,413	1,434	612
55 to 59 years	1,067,237	36,794	29,547	97,084	148,822	1,130	964	466
60 to 64 years	871,760	29,499	23,545	73,743	118,677	737	563	322
65 to 69 years	664,517	22,632	19,486	54,662	90,388	395	363	176
70 to 74 years	557,717	19,381	17,593	45,701	74,550	304	250	93
75 to 79 years	494,882	18,276	16,664	39,689	64,974	214	185	64
80 to 84 years	395,111	15,982	14,143	30,415	53,070	116	128	29
85 to 89 years	243,720	10,685	9,975	19,498	34,317	70	68	9
90 years and over	136,984	6,580	6,553	11,163	19,283	40	30	11

1. These postcensal population estimates, which are based on the 2006 census, are adjusted for net census undercoverage and include non-permanent residents.  
 2. 2007 population counts for the "under 1" and "1 to 4" categories were adjusted for 2007 births by Health Statistics Division.

**Source(s):** Statistics Canada, Demography Division (CANSIM table 051-0001 released on January 15, 2009) and Health Statistics Division.